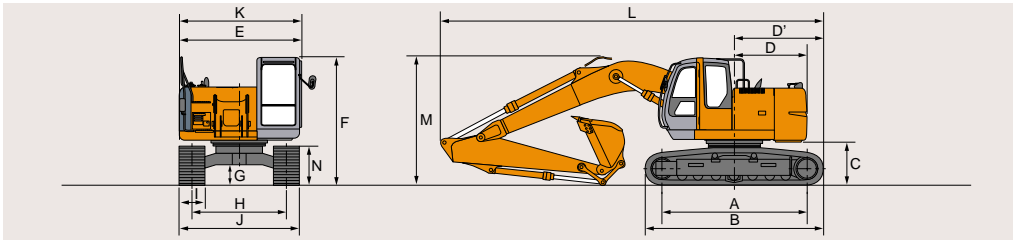


DIMENSIONS

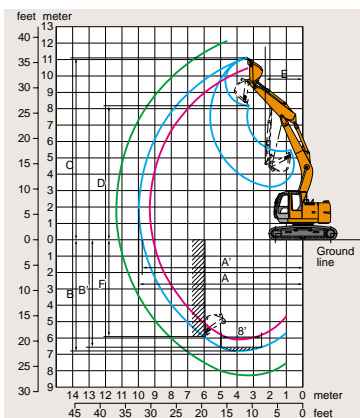


Unit: mm (ft in)

	ZAXIS225US	ZAXIS225USLC
A Distance between tumblers	3 370 (11'1")	3 660 (12'0")
B Undercarriage length	4 170 (13'8")	4 460 (14'8")
*C Counterweight clearance	1 005 (3'4")	1 005 (3'4")
D Rear-end swing radius	1 680 (5'6")	1 680 (5'6")
D' Rear-end length	1 680 (5'6")	1 680 (5'6")
E Overall width of upperstructure	2 810 (9'3")	2 810 (9'3")
F Overall height of cab	2 950 (9'8")	2 950 (9'8")
*G Min. ground clearance	450 (1'6")	450 (1'6")
H Track gauge	2 200 (7'3")	2 390 (7'10")
I Track shoe width	G 600 (24")	G 600 (24")
J Undercarriage width	2 800 (9'2")	2 990 (9'10")
K Overall width	2 810 (9'3")	2 990 (9'10")
L Overall length		
With 2.22 m (7'3") arm	9 040 (29'8")	9 180 (30'1")
With 2.91 m (9'7") arm	8 920 (29'3")	9 060 (29'9")
With 4.41 m (14'6") arm	9 000 (29'6")	9 140 (30'0")
M Overall height of boom		
With 2.22 m (7'3") arm	3 160 (10'4")	3 160 (10'4")
With 2.91 m (9'7") arm	2 990 (9'10")	2 990 (9'10")
With 4.41 m (14'6") arm	3 430 (11'3")	3 430 (11'3")
N Track height		
With triple grouser shoes	920 (3'0")	920 (3'0")

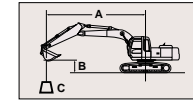
* Excluding track shoe lug. G: Triple grouser shoe

WORKING RANGES



	ZAXIS225US / ZAXIS225USLC		
Arm length	2.22 m (7'3")	2.91 m (7'3")	4.41 m (14'6")*
A Max. digging reach	9 350 (30'8")	10 010 (32'10")	11 370 (37'4")
A' Max. digging reach (on ground)	9 140 (30'0")	9 810 (32'2")	11 200 (36'5")
B Max. digging depth	6 100 (20'0")	6 790 (22'3")	8 290 (27'2")
B' Max. digging depth (8' level)	5 820 (19'1")	6 570 (21'7")	8 100 (26'7")
C Max. cutting height	10 550 (34'7")	11 100 (36'5")	12 100 (39'8")
D Max. dumping height	7 640 (25'1")	8 190 (26'10")	9 190 (30'2")
E Min. swing radius	2 590 (8'6")	2 300 (7'7")	2 540 (8'4")
F Max. vertical wall	5 000 (16'5")	5 920 (19'5")	7 350 (24'11")
Bucket digging force**	151 kN (15 400 kgf., 34 000 lbf)		
	129 kN (13 200 kgf., 29 100 lbf)		
Arm crowd force**	136 kN (13 900 kgf., 30 600 lbf)		
	109 kN (11 100 kgf., 24 500 lbf)		
SAE : PCSA	80 kN (8 200 kgf., 17 900 lbf)		
	131 kN (13 400 kgf., 29 500 lbf)		
SAE : PCSA	102 kN (10 400 kgf., 22 900 lbf)		
	78 kN (8 000 kgf., 17 500 lbf)		

Excluding track shoe lug * 2.91 m (9'6") arm + 1.50 m (4'11") extension arm ** At power boost



A: Load radius
B: Load point height
C: Lifting capacity

METRIC MEASURE

ZAXIS225US

Rating over-side or 360 degrees Rating over-front Unit: 1 000 kg

Conditions	Load point height	Load radius								At max. reach						
		3 m		4 m		5 m		6 m		7 m		8 m		meter		
Boom 5.68 m	6 m					*3.88	*3.88	*3.95	*3.95	3.34	*4.01			2.16	*2.38	8.82
Arm 2.91 m	4 m	*6.77	*6.77	*6.23	*6.23	*5.33	*5.33	4.19	*4.79	3.21	*4.45	2.50	4.13	1.79	*2.40	9.50
Bucket	2 m			6.94	*10.0	5.03	*7.58	3.81	*6.14	2.98	4.96	2.36	3.98	1.67	*2.58	9.65
SAE, PCSA : 0.80 m ³	0 (Ground)			6.48	*7.20	4.63	8.09	3.53	6.04	2.78	4.75	2.24	3.85	1.73	*2.96	9.31
CECE : 0.70 m ³	-2 m	*8.27	*8.27	6.48	*11.0	4.54	7.96	3.43	5.93	2.70	4.66	2.20	3.80	2.07	3.57	8.41
Shoe 600 mm	-4 m	*10.9	*10.9	6.66	*8.97	4.65	*7.40	3.51	6.01							

Conditions	Load point height	Load radius								At max. reach						
		3 m		4 m		5 m		6 m		7 m		8 m		meter		
Boom 5.68 m	6 m			*4.89	*4.89	*4.74	*4.74	4.33	*4.66					2.55	*3.91	8.08
Arm 2.22 m	4 m					5.50	*6.21	4.10	*5.41	3.16	*4.95			2.07	3.48	8.82
Bucket	2 m					4.89	*8.32	3.75	6.28	2.95	4.93	2.36	3.98	1.93	3.29	8.99
SAE, PCSA : 0.80 m ³	0 (Ground)					4.62	8.04	3.53	6.03	2.80	4.76	2.27	3.88	2.03	3.47	8.62
CECE : 0.70 m ³	-2 m	*8.53	*8.53	6.61	*10.1	4.62	8.03	3.49	5.99	2.77	4.73			2.50	4.23	7.61
Shoe 600 mm	-4 m	*8.72	*8.72	6.84	*7.69	4.80	*6.49	3.66	*5.14							

ZAXIS225USLC

Unit: 1 000 kg

Conditions	Load point height	Load radius								At max. reach						
		3 m		4 m		5 m		6 m		7 m		8 m		meter		
Boom 5.68 m	6 m					*3.88	*3.88	*3.95	*3.95	3.76	*4.01			*2.38	*2.38	8.82
Arm 2.91 m	4 m	*6.77	*6.77	*6.23	*6.23	*5.33	*5.33	4.71	*4.79	3.62	*4.45	2.85	*4.24	2.07	*2.40	9.50
Bucket	2 m			7.95	*10.0	5.72	*7.58	4.33	*6.14	3.39	*5.27	2.71	4.59	1.93	*2.58	9.65
SAE, PCSA : 0.80 m ³	0 (Ground)			*7.20	*7.20	5.31	*8.92	4.04	7.00	3.19	5.49	2.58	4.45	2.01	*2.96	9.31
CECE : 0.70 m ³	-2 m	*8.27	*8.27	7.47	*11.0	5.22	*8.81	3.94	6.89	3.11	5.41	2.54	4.41	2.39	*3.72	8.41
Shoe 600 mm	-4 m	*10.9	*10.9	7.65	*8.97	5.33	*7.40	4.02	*6.06							

Conditions	Load point height	Load radius								At max. reach						
		3 m		4 m		5 m		6 m		7 m		8 m		meter		
Boom 5.68 m	6 m			*4.89	*4.89	*4.74	*4.74	*4.66	*4.66					2.89	*3.91	8.08
Arm 2.22 m	4 m					6.19	*6.21	4.62	*5.41	3.57	*4.95			2.38	*3.97	8.82
Bucket	2 m					5.58	*8.32	4.27	*6.63	3.36	*5.65	2.70	4.58	2.22	3.80	8.99
SAE, PCSA : 0.80 m ³	0 (Ground)					5.29	*9.09	4.04	7.00	3.21	5.50	2.61	4.48	2.33	4.01	8.62
CECE : 0.70 m ³	-2 m	*8.53	*8.53	7.61	*10.1	5.29	*8.50	4.00	6.95	3.18	5.47			2.86	*4.70	7.61
Shoe 600 mm	-4 m	*8.72	*8.72	*7.69	*7.69	5.48	*6.49	4.17	*5.14							

1. Ratings are based on SAE J1097.
2. Lifting capacity of the ZAXIS Series does not exceed 75% of tipping load with the machine on firm, level ground or 87% full hydraulic capacity.
3. The load point is a hook (not standard equipment) located on the back of the bucket.
4. *Indicates load limited by hydraulic capacity.

STANDARD EQUIPMENT

Standard equipment may vary by country, so please consult your Hitachi dealer for details.

ENGINE

- H/P mode control
- E mode control
- 50 A alternator
- Dry-type air filter with evacuator valve (with safety element)
- Cartridge-type engine oil filter
- Cartridge-type fuel filter
- Radiator and oil cooler with dust protective net
- Radiator reserve tank
- Fan guard
- Isolation-mounted engine
- Auto-idle system
- Auto acceleration system

HYDRAULIC SYSTEM

- Work mode selector
- Engine speed sensing system
- E-P control system
- Power boost
- Auto power lift
- Quick warm-up system for pilot circuit
- Shockless valve in pilot circuit
- Boom-arm anti-drift valve
- Control valve with main relief valve
- Extra port for control valve
- Suction filter
- Full-flow filter
- Pilot filter

CAB

CRES (Corner Reinforced Structure) cab

- OPG top guard fitted level I (ISO) compliant cab
- All-weather sound-suppressed steel cab
- Tinted (bronze color) glass windows
- 4 fluid-filled elastic mounts
- Openable front windows-upper, and lower and left side windows
- Intermittent windshield wipers
- Front window washer
- Adjustable reclining seat with adjustable armrests
- Footrest
- Electric double horn
- AM - FM radio with digital clock
- Auto-idle / acceleration selector
- Seat belt
- Drink holder
- Cigar lighter
- Ashtray
- Storage box
- Glove compartment
- Floor mat
- Heater
- Pilot control shut-off lever
- Engine stop knob

MONITOR SYSTEM

- Meters:
Hourmeter and trip-meter, engine coolant temperature gauge and fuel gauge
- Warning lamps:
Alternator charge, engine oil pressure, engine overheat, air filter restriction and minimum fuel level
- Pilot lamps:
Engine preheat, work light, auto-idle, auto-acceleration, digging mode and attachment mode
- Alarm buzzers:
Engine oil pressure and engine overheat

LIGHTS

- 2 working lights

UPPERSTRUCTURE

- Undercover
- 7 600 kg (16 800 lb) counterweight
- Fuel level float
- Hydraulic oil level gauge
- Tool box
- Rearview mirror (right, left side & top of C/W)
- Swing parking brake

UNDERCARRIAGE

- Travel parking brake
- Travel motor covers
- Track guards and hydraulic track adjuster
- Bolt-on sprocket
- Upper rollers and lower rollers
- Reinforced track links with pin seals
- 600 mm (24") triple grouser shoes

FRONT ATTACHMENTS

- HN bushing
- WC thermal spraying
- Reinforced resin thrust plate
- Flanged pin
- Bucket clearance adjust mechanism
- Monolithically cast bucket link A
- Centralized lubrication system
- Dust seal on all bucket pins
- 2.91 m (9'7") arm
- 0.80 m³ (1.05 yd³ : SAE, PCSA heaped) bucket

MISCELLANEOUS

- Standard tool kit
- Lockable machine covers
- Lockable fuel filling cap
- Skid-resistant tapes, plates and handrails.
- Travel direction mark on track frame
- Onboard ICX

OPTIONAL EQUIPMENT

Optional equipment may vary by country, so please consult your Hitachi dealer for details.

- Auto control air conditioner
- Suspension seat
- Hose rupture valves
- Electric fuel refilling pump
- Swing motion alarm device with lamps
- Travel motion alarm device
- Transparent roof

- Additional pump
- Fuel double filters
- Air cleaner double filters
- Tropical cover
- Large-capacity battery
- Attachment basic piping

- Accessories for breaker
- Accessories for breaker & crusher
- Accessories for 2 speed selector
- Front glass lower guard
- Front glass upper guard
- 600 mm (24") reinforced triple grouser shoes
- Rear light