



## WEIGHTS AND GROUND PRESSURE

Equipped with 5.50 m (18'1") boom, 2.70 m (8'11") arm and 0.70 m<sup>3</sup> (0.92 yd<sup>3</sup>: SAE, PCSA heaped) bucket.

ZAXIS180LC			
Shoe type	Shoe width	Operating weight	Ground pressure
Triple grouser	600 mm (24")	17 800 kg (39 200 lb)	39 kPa (0.40 kgf/cm <sup>2</sup> , 5.69 psi)
	700 mm (28")	18 200 kg (40 100 lb)	34 kPa (0.35 kgf/cm <sup>2</sup> , 4.98 psi)
	800 mm (31")	18 400 kg (40 600 lb)	30 kPa (0.31 kgf/cm <sup>2</sup> , 4.41 psi)
	900 mm (35")	18 700 kg (41 200 lb)	27 kPa (0.28 kgf/cm <sup>2</sup> , 3.98 psi)
Triangler	760 mm (30")	18 800 kg (41 400 lb)	32 kPa (0.33 kgf/cm <sup>2</sup> , 4.69 psi)
	600 mm (24")	18 600 kg (41 000 lb)	41 kPa (0.42 kgf/cm <sup>2</sup> , 0.41 psi)

ZAXIS180LCN			
Shoe type	Shoe width	Operating weight	Ground pressure
Triple grouser	500 mm (20")	17 500 kg (38 300 lb)	47 kPa (0.48 kgf/cm <sup>2</sup> , 6.83 psi)
	600 mm (24")	17 700 kg (39 000 lb)	39 kPa (0.40 kgf/cm <sup>2</sup> , 5.69 psi)
	700 mm (28")	18 100 kg (39 900 lb)	34 kPa (0.35 kgf/cm <sup>2</sup> , 4.98 psi)
Flat	600 mm (24")	18 500 kg (40 800 lb)	41 kPa (0.42 kgf/cm <sup>2</sup> , 0.41 psi)

Weights of the basic machines [including 3 800 kg (8 380 lb) counterweight and triple grouser shoes, excluding front-end attachment, fuel, hydraulic oil, engine oil and coolant etc.] are:

ZAXIS180LC ..... 13 800 kg (30 400 lb) with 600 mm (24") shoes  
 ZAXIS180LCN ..... 13 500 kg (29 800 lb) with 500 mm (20") shoes

## Buckets

Capacity		Width		No. of teeth	Weight	Recommendation			
SAE, PCSA heaped	CECE heaped	Without side cutters	With side cutters			ZAXIS180LC, ZAXIS180LCN			
							2.25m (7'5") arm	2.70m (8'10") arm	3.20m (10'6") arm
0.51 m <sup>3</sup> (0.67 yd <sup>3</sup> )	0.45 m <sup>3</sup>	720 mm (2'4")	850 mm (2'10")	3	530 kg (1 170 lb)				
0.70 m <sup>3</sup> (0.92 yd <sup>3</sup> )	0.60 m <sup>3</sup>	900 mm (2'11")	1 010 mm (3'4")	4	610 kg (1 340 lb)				
0.80 m <sup>3</sup> (1.05 yd <sup>3</sup> )	0.70 m <sup>3</sup>	1 030 mm (3'5")	1 140 mm (3'9")	5	670 kg (1 480 lb)				
0.91 m <sup>3</sup> (1.19 yd <sup>3</sup> )	0.80 m <sup>3</sup>	1 150 mm (3'9")	1 280 mm (4'2")	5	720 kg (1 590 lb)				
1.10 m <sup>3</sup> (1.44 yd <sup>3</sup> )	0.90 m <sup>3</sup>	1 330 mm (4'4")	1 460 mm (4'10")	6	780 kg (1 720 lb)				
1.20 m <sup>3</sup> (1.57 yd <sup>3</sup> )	1.00 m <sup>3</sup>	1 450 mm (4'9")	—	6	690 kg (1 520 lb)				
*1 0.70 m <sup>3</sup> (0.92 yd <sup>3</sup> )	0.60 m <sup>3</sup>	900 mm (2'11")	1 010 mm (3'4")	5	700 kg (1 540 lb)				
*1 0.80 m <sup>3</sup> (1.05 yd <sup>3</sup> )	0.70 m <sup>3</sup>	1 030 mm (3'5")	1 140 mm (3'9")	5	770 kg (1 700 lb)				
*1 0.91 m <sup>3</sup> (1.19 yd <sup>3</sup> )	0.80 m <sup>3</sup>	1 150 mm (3'9")	1 280 mm (4'2")	5	820 kg (1 810 lb)				
*2 0.60 m <sup>3</sup> (0.79 yd <sup>3</sup> )	0.50 m <sup>3</sup>	800 mm (2'8")	—	3	950 kg (2 090 lb)				
One point ripper bucket					1	540 kg (1 190 lb)			
Slope finishing blade: Width 1 100 mm (3'7"), length 1 800 mm (5'11")					—	590 kg (1 300 lb)			
V-type bucket. 0.4 m <sup>3</sup> (0.52 yd <sup>3</sup> : CECE heaped)					3	530 kg (1 170 lb)			
*3 Clamshell bucket: 0.6 m <sup>3</sup> (0.79 yd <sup>3</sup> : CECE heaped). Width 940 mm (3'1")					8	1 240 kg (2 730 lb)			
*4 Clamshell bucket: 0.6 m <sup>3</sup> (0.79 yd <sup>3</sup> : CECE heaped). Width 870 mm (2'10")					8	960 kg (2 120 lb)			

\*1 Reinforced bucket \*2 Ripper bucket \*3 Center pull type \*4 Shell push type

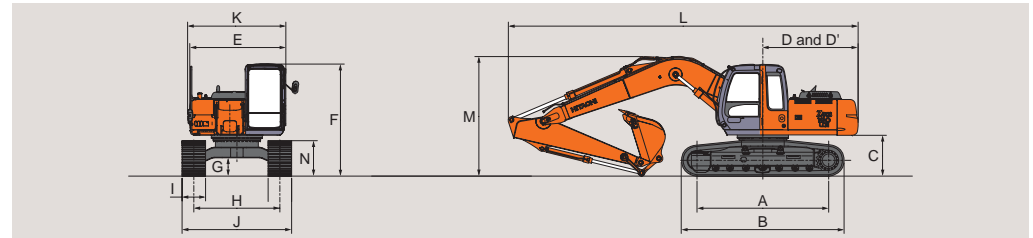
## SERVICE REFILL CAPACITIES

	liters	US gal	Imp gal
Fuel tank	280.0	74.0	61.6
Engine coolant	19.2	5.1	4.2
Engine oil	15.8	4.2	3.5
Swing device	6.2	1.6	1.4
Travel final device	6.8	1.8	1.5
(each side)			
Hydraulic system	180.0	47.6	39.6
Hydraulic oil tank	100.0	26.4	22.0

## BACKHOE ATTACHMENTS

Boom and arms are of welded, box-section design. 5.50 m (18'1") boom, and 2.25 m (7'5"), 2.70 m (8'11") and 3.20 m (10'6") arms are available. Bucket is of welded steel structure. Side clearance adjust mechanism provided on the bucket joint bracket.

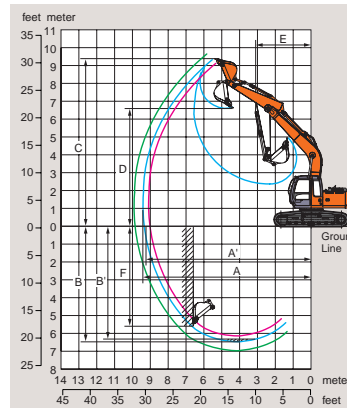
## DIMENSIONS



	ZAXIS180LC	ZAXIS180LCN
A Distance between tumbles	3 370 (11'1")	
B Undercarriage length	4 170 (13'8")	
*C Counterweight clearance	1 000 (3'3")	
D Rear-end swing radius	2 440 (8'0")	
D' Rear-end length	2 440 (8'0")	
E Overall width of upperstructure	2 460 (8'1")	
F Overall height of cab	2 880 (9'5")	
*G Min. ground clearance	450 (1'6")	
H Track gauge	2 200 (7'3")	1 990 (6'6")
I Track shoe width	G 600 (24")	G 500 (20")
J Undercarriage width	2 800 (9'2")	2 490 (8'2")
K Overall width	2 800 (9'2")	2 500 (8'2")
L Overall length		
With 2.25 m (7'5") arm	8 980 (29'6")	
With 2.70 m (8'11") arm	8 950 (29'4")	
With 3.20 m (10'6") arm	8 950 (29'4")	
M Overall height of boom		
With 2.25 m (7'5") arm	3 100 (10'2")	
With 2.70 m (8'11") arm	3 080 (10'1")	
With 3.20 m (10'6") arm	3 390 (11'2")	
N Track height		
With triple grouser shoes	910 (3'0")	

\* Excluding track shoe lug. G: Triple grouser shoe

## WORKING RANGES



		ZAXIS180LC, ZAXIS180LCN		
Arm length		2.25 m (7'5")	2.7 m (8'11")	3.2 m (10'6")
A	Max. digging reach	9 060 (29'9")	9 420 (30'1")	9 930 (32'7")
A'	Max. digging reach (on ground)	8 900 (29'2")	9 260 (30'5")	9 780 (32'1")
B	Max. digging depth	6 110 (20'1")	6 560 (21'6")	7 050 (23'2")
B'	Max. digging depth (B' level)	5 850	6 310	6 860
C	Max. cutting height	9 280 (30'5")	9 390 (30'10")	9 780 (32'1")
D	Max. dumping height	6 460 (21'2")	6 580 (21'7")	6 950 (22'10")
E	Min. swing radius	3 140 (10'4")	3 130 (10'3")	3 120 (10'3")
F	Max. vertical wall	5 190 (17'0")	5 540 (18'2")	6 250 (20'6")
Bucket digging force	ISO	116 kN (11 800 kgf, 26 000 lbf)	116 kN (11 800 kgf, 26 000 lbf)	116 kN (11 800 kgf, 26 000 lbf)
	SAE : PCSA	102kN (10 400kgf, 22 900 lbf)	102kN (10 400kgf, 22 900 lbf)	102kN (10 400kgf, 22 900 lbf)
Arm crowding force	ISO	99 kN (10 100 kgf, 22 300 lbf)	86 kN (8 780 kgf, 19 400 lbf)	76 kN (7 760 kgf, 17 100 lbf)
	SAE : PCSA	95 kN (9 680 kgf, 21 300 lbf)	83 kN (8 460 kgf, 18 700 lbf)	74 kN (7 540 kgf, 16 600 lbf)

Excluding track shoe lug.

- Suitable for materials with density of 1 800 kg/m<sup>3</sup> (3 030 lb/yd<sup>3</sup>) or less
- Suitable for materials with density of 1 600 kg/m<sup>3</sup> (2 700 lb/yd<sup>3</sup>) or less
- Suitable for materials with density of 1 100 kg/m<sup>3</sup> (1 850 lb/yd<sup>3</sup>) or less
- Heavy-duty service
- ◇ Slope-finishing service
- Not applicable