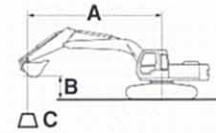


LIFTING CAPACITIES



A: Load radius
B: Load point height
C: Lifting capacity



Rating over-side or 360 degrees



Rating over-front

Unit: 1 000 kg

EX225USR

Conditions	Load point height	Load radius										At max. reach				
		3 m (9'10")		4 m (13'2")		5 m (16'5")		6 m (19'8")		7 m (23')		8 m (26'2")		meter (ft in)		
Boom 5.68 m (18'8")	6 m (19'8")									*3.30 (7.3)	*3.30 (7.3)			*1.95 (4.3)	*1.95 (4.3)	8.61 (28'3")
Arm 2.91 m (9'7")	4 m (13'2")						*4.12 (9.1)	*4.12 (9.1)	3.26 (7.2)	*3.94 (8.7)	2.55 (5.6)	*3.50 (7.7)	1.92 (4.2)	*1.96 (4.3)	9.36 (30'9")	
Bucket	2 m (6'7")			7.27 (16.0)	*8.61 (19.0)	5.21 (11.5)	*6.45 (14.2)	3.93 (8.7)	*5.35 (11.8)	3.07 (6.8)	*4.70 (10.4)	2.44 (5.4)	3.99 (8.8)	1.77 (3.9)	*2.09 (4.6)	9.57 (31'5")
PCSA: 0.80 m ³ (1.05 yd ³)	0 (ground)			6.68 (14.7)	*7.82 (17.2)	4.79 (10.6)	*8.09 (17.8)	3.66 (8.1)	6.07 (13.4)	2.88 (6.3)	4.77 (10.5)	2.32 (5.1)	3.87 (8.5)	1.82 (4.0)	*2.39 (5.3)	9.29 (30'6")
CECE: 0.70 m ³	-2 m (-6'7")	*7.12 (15.7)	*7.12 (15.7)	6.61 (14.6)	*10.84 (23.9)	4.66 (10.3)	7.96 (17.5)	3.54 (7.8)	5.94 (13.1)	2.80 (6.2)	4.68 (10.3)	2.28 (5.0)	3.82 (8.4)	2.12 (4.7)	*2.99 (6.6)	8.46 (27'9")
Shoe 600 mm (24")	-4 m (-13'2")	11.05 (24.4)	*12.11 (26.7)	6.74 (14.9)	*9.61 (21.2)	4.73 (10.4)	*7.76 (17.1)	3.58 (7.9)	5.99 (13.2)	2.86 (6.3)	4.75 (10.5)					

EX225USRlc

Conditions	Load point height	Load radius										At max. reach				
		3 m (9'10")		4 m (13'2")		5 m (16'5")		6 m (19'8")		7 m (23')		8 m (26'2")		meter		
Boom 5.68 m (18'8")	6 m (19'8")									*3.30 (7.3)	*3.30 (7.3)			*1.95 (4.3)	*1.95 (4.3)	8.61 (28'3")
Arm 2.91 m (9'7")	4 m (13'2")						*4.12 (9.1)	*4.12 (9.1)	3.66 (8.1)	*3.94 (8.7)	2.88 (6.3)	*3.50 (7.7)	*1.96 (4.3)	*1.96 (4.3)	9.36 (30'9")	
Bucket	2 m (6'7")			8.24 (18.2)	*8.61 (19.0)	5.87 (12.9)	*6.45 (14.2)	4.43 (9.8)	*5.35 (11.8)	3.46 (7.6)	*4.70 (10.4)	2.77 (6.1)	*4.30 (9.5)	2.03 (4.5)	*2.09 (4.6)	9.57 (31'5")
PCSA: 0.80 m ³ (1.05 yd ³)	0 (ground)			7.63 (16.8)	*7.82 (17.2)	5.44 (12.0)	*8.09 (17.8)	4.15 (9.1)	*6.47 (14.3)	3.28 (7.2)	*5.45 (12.0)	2.65 (5.8)	4.45 (9.8)	2.09 (4.6)	*2.39 (5.3)	9.29 (30'6")
CECE: 0.70 m ³	-2 m (-6'7")	*7.12 (15.7)	*7.12 (15.7)	7.56 (16.7)	*10.84 (23.9)	5.31 (11.7)	*8.52 (18.8)	4.02 (8.9)	6.87 (15.1)	3.19 (7.0)	5.39 (11.9)	2.60 (5.7)	4.40 (9.7)	2.43 (5.4)	*2.99 (6.6)	8.46 (27'9")
Shoe 600 mm (24")	-4 m (-13'2")	*12.11 (26.7)	*12.11 (26.7)	7.69 (17.0)	*9.61 (21.2)	5.38 (11.9)	*7.76 (17.1)	4.07 (9.0)	*6.33 (14.0)	3.25 (7.2)	*5.06 (11.2)					

Notes: 1. Ratings are based on SAE J1097

2. Lifting capacity of the EX Series does not exceed 75% of tipping load with the machine on firm, level ground or 87% full hydraulic capacity.

3. The load point is hook (not standard equipment) located on the back of the bucket.

4. Asterisk mark (*) indicates load limited by hydraulic capacity.

BUCKETS

Capacity		Width		No. of teeth	Weight kg (lb)	Recommendation EX225USR/EX225USRlc 2.91 m (9'7") arm
PCSA heaped m ³ (yd ³)	CECE heaped m ³	Without side cutters mm (in)	With side cutters mm (in)			
0.51 (0.67)	0.45	720 (28)	850 (33)	3	520 (1 150)	
0.80 (1.05)	0.70	1 030 (41)	1 140 (45)	5	670 (1 480)	
0.91 (1.19)	0.80	1 150 (45)	1 280 (50)	5	700 (1 540)	
1.10 (1.44)	0.90	1 330 (52)	1 460 (58)	6	760 (1 680)	
*0.80 (1.05)	0.70	1 030 (41)	1 140 (45)	5	770 (1 700)	
*0.91 (1.19)	0.80	1 150 (45)	1 280 (50)	5	810 (1 790)	
V-shaped bucket: 0.40 m ³ , Side plate inclination: 45°				3	530 (1 170)	
Clamshell bucket: 0.60 m ³ , Width 940 mm				8	1 240 (2 730)	
Slope-finishing blade: Width 1 100 mm (43"), length 2 200 mm (87")					690 (1 520)	

*Reinforced bucket

Suitable for materials with density of 2 000 kg/m³ (3 370 lb/yd³) or less

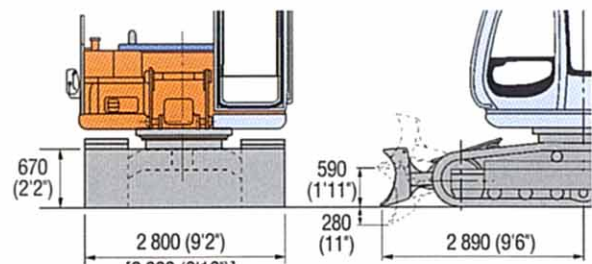
Suitable for materials with density of 1 600 kg/m³ (2 700 lb/yd³) or less

Slope-finishing service

- Not recommended

BLADE (option)

	EX225USR	EX225USRlc
Operating weight	kg (lb) 23 200 (51 200)	24 000 (52 900)
Shoe type	600 mm (24") triple grouser shoe	
Ground pressure	kPa (kgf/cm ² , psi) 52 (0.53, 7.54)	50 (0.51, 7.25)
Blade height	mm (ft in) 670 (2'2")	
width	mm (ft in) 2 800 (9'2")	2 990 (9'10")



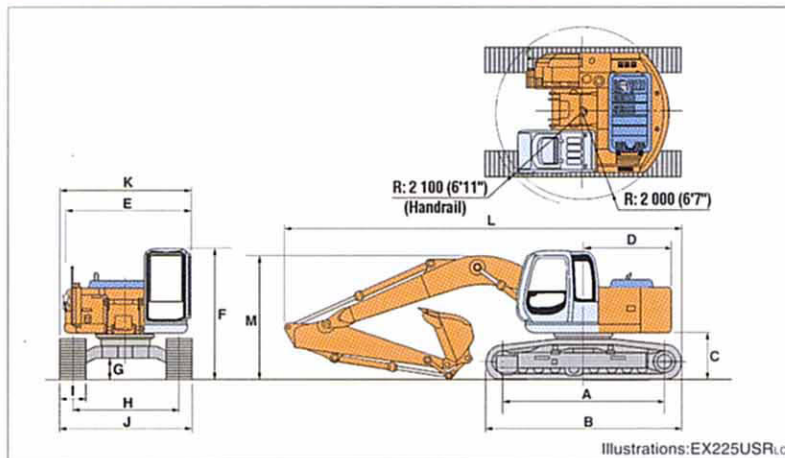
Figures in | | denote those of EX225USRlc.

SPECIFICATIONS

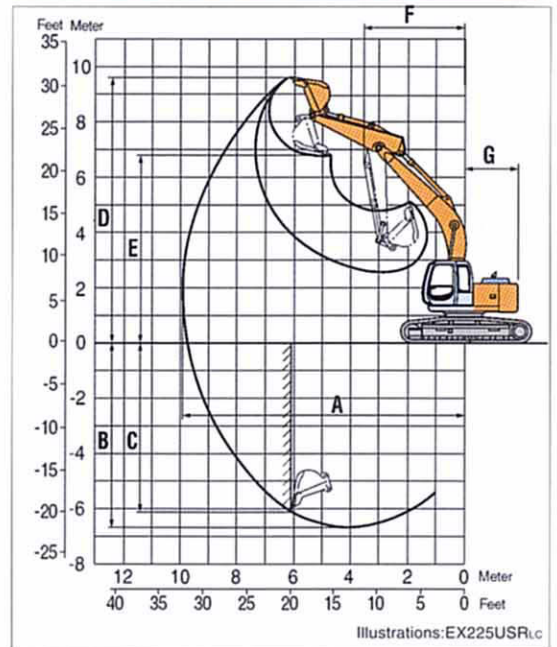
		EX225USR	EX225USRLc
Operating weight	kg (lb)	21 700 (47 800)	22 500 (49 600)
Bucket capacity CECE/PCSA (yd ³) heaped	m ³	0.70/0.80 (1.05)	
Shoe type		600 mm (24") triple grouser shoes	
Ground pressure	kPa (kgf/cm ²)	48 (0.49)	47 (0.48)
Swing speed	min ⁻¹ (rpm)	13.9	
Gradeability	deg. (%)	35° (70)	
Travel speed	High/Low	km/h (mph)	
		5.3/3.4 (3.3/2.1)	
Bucket digging force	ISO	kN (kgf, lbf)	127 (12 900, 28 400) *134 (13 700, 30 200)
	SAE: PCSA	kN (kgf, lbf)	113 (11 500, 25 400) *120 (12 200, 26 900)
Arm crowd force	ISO	kN (kgf, lbf)	93 (9 500, 20 900) *99 (10 100, 22 300)
	SAE: PCSA	kN (kgf, lbf)	89 (9 100, 20 100) *94 (9 600, 21 200)
Engine model		Isuzu A-6BG1T	
Rated flywheel horsepower (DIN 6271, net)	kW/min ⁻¹ (PS/rpm)	STD mode: 99/1 950 (135/1 950) H/P mode: 107/2 150 (145/2 150)	
Rated flywheel horsepower (SAE J1349, net)	kW/min ⁻¹ (HP/rpm)	STD mode: 98/1 950 (132/1 950) H/P mode: 105/2 150 (142/2 150)	
Hydraulic pump		2 variable displacement axial piston pumps	
Main relief valve settings	MPa (kgf/cm ² , psi)	Implement: 34.3 (350, 4 980) Travel: 34.3 (350, 4 980)	
Fuel tank capacity	L (US gal, Imp gal)	230.0 (60.8, 50.6)	
Hydraulic tank capacity	L (US gal, Imp gal)	135.0 (35.7, 29.7)	
Engine oil capacity	L (US gal, Imp gal)	25.0 (6.6, 5.5)	

* At power boost

DIMENSIONS



WORKING RANGES



5.68m (18'8") boom/2.91m (9'7") arm

	EX225USR/EX225USRLc
A Max. digging reach	9 910 mm (32'6")
B Max. digging depth	6 670 mm (21'11")
C Max. vertical wall	6 050 mm (19'10")
D Max. cutting height	9 600 mm (31'6")
E Max. dumping height	6 780 mm (22'3")
F Min. front end swing radius	3 540 mm (11'7")
G Rear-end swing radius	2 000 mm (6'7")

Excluding track shoe lug height

	EX225USR	EX225USRLc
A Distance between tumblers	3 370 (11'1")	3 660 (12'0")
B Undercarriage length	4 170 (13'8")	4 460 (14'8")
C Counterweight clearance*1	1 020 (3'4")	
D Rear-end length	2 000 (6'7")	
E Overall width of upperstructure	2 860 (9'5")	
F Overall height	2 940 (9'8")	
G Min. ground clearance*1	450 (1'6")	
H Track gauge	2 200 (7'3")	2 390 (7'10")
I Track shoe width*2	600 (24")	
J Undercarriage width	2 800 (9'2")	2 990 (9'10")
K Overall width	2 860 (9'5")	2 990 (9'10")
L Overall length	8 865 (29'1")	9 010 (29'7")
M Overall height of boom	2 970 (9'9")	

*1 Excluding track shoe lug height

*2 Triple grouser shoe

These specifications are subject to change without notice. Illustrations and photos may or may not include optional equipment, accessories, and all standard equipment.