



ENGINE

Model	Hino H06C-T
Type	4-cycle water-cooled, direct injection
Aspiration	Turbocharged
No. of cylinders	6
Rated flywheel horsepower (DIN 6271, net)	118 kW (160 PS) at 2 100 min ⁻¹ (rpm)
Rated flywheel horsepower (SAE J1349, net)	116 kW (156 HP) at 2 100 min ⁻¹ (rpm)
Maximum torque	530 N.m (54 kgf.m, 390 lbf.ft) at 1 800 rpm
Piston displacement	6.49 L (396 in ³)
Bore and stroke	108 mm × 118 mm (4.25" × 4.65")
Batteries	2 × 12 V, 120 AH
Governor	Mechanical, speed control with stepping motor



HYDRAULIC SYSTEM

ELLE (Electronic Load-sensing Excavation) system designed for job efficiency and controllability.

- Load-sensing system
- Flow dividing control system
- Work mode selector
 - General-purpose mode / Trenching mode
 - Grading mode / Precision mode

Power selector designed for maximum productivity and fuel savings.

- Engine speed sensing system
 - P (Power) mode / E (Economy) mode
 - L (Low speed) mode / I (Low idle) mode

Main pumps 2 variable displacement axial piston pumps

Maximum oil flow 2 × 189 L/min (49.9 US gpm, 41.6 Imp gpm)

Pilot pump 1 gear pump

Maximum oil flow 34 L/min (9.0 US gpm, 7.5 Imp gpm)

Hydraulic Motors

Travel 2 variable displacement axial piston motors

Swing 1 axial piston motor

Relief Valve Settings

Implement circuit 34.3 MPa (350 kgf/cm², 4 980 psi)

Swing circuit 32.2 MPa (328 kgf/cm², 4 660 psi)

Travel circuit 36.3 MPa (370 kgf/cm², 5 260 psi)

Pilot circuit 4.9 MPa (50 kgf/cm², 710 psi)

Hydraulic Cylinders

High-strength piston rods and tubes. Cylinder cushion mechanisms provided in all cylinders to absorb shocks at stroke ends.

Dimensions

	Qty	Bore	Rod diameter
Boom	2	125 mm (4.92")	90 mm (3.54")
Arm	1	135 mm (5.32")	100 mm (3.94")
Bucket	1	125 mm (4.92")	85 mm (3.35")

Hydraulic Filters

Hydraulic circuits use high-quality hydraulic filters. A suction filter is incorporated in the suction line, and 10 μm full-flow filters in the return line and swing/travel motor drain lines.



CONTROLS

Pilot controls. Hitachi's original shockless valve and quick warm-up system built in the pilot circuit. Hydraulic warm-up control system for engine and hydraulic oil. Multi selection lever with rotary valve is optionally available for selection of control lever direction.

Implement levers 2

Travel levers with pedals 2



UPPERSTRUCTURE

Revolving Frame

Welded sturdy box construction, using heavy-gauge steel plates for ruggedness. D-section frame for resistance to deformation.

Swing Mechanism

Axial piston motor with planetary reduction gear is bathed in oil. Swing circle is single-row, shear-type ball bearing with induction-hardened internal gear. Internal gear and pinion gear are immersed in lubricant. Swing parking brake is spring-set/hydraulic-released disc type. Swing dampener valve in the swing circuit prevents coasting when stopping swing. Swing cushion valve built in swing motor absorbs shocks when stopping swing.

Swing speed 10.0 min⁻¹ (rpm)

Operator's Cab

Independent roomy cab, 940 mm (37") wide by 1 620 mm (64") high, conforming to ISO* Standards. Reinforced glass windows on 4 sides for visibility. Front windows (upper and lower) are openable and spring-assisted for easy storing in the cab and absorbing shocks during lowering. Adjustable, suspension seat with armrests; movable with or without control levers and monitor panel.

* International Standard Organization



UNDERCARRIAGE

Tracks

Tractor-type undercarriage. Welded track frame, using carefully selected materials. Side frame welded to track frame. Lubricated track rollers, idlers, and sprockets with floating seals.

Track shoes with triple grousers made of induction-hardened roll alloy. Flat and triangular shoes are also available. Heat-treated connecting pins with dirt seals. Hydraulic (grease) track adjusters with shock-absorbing recoil springs.

Numbers of Rollers and Shoes on Each Side

Upper rollers	2
Lower rollers	8: EX220 ₃
	9: EX220LC ₃
Track shoes	47: EX220 ₃
	51: EX220LC ₃
Track guard	1

Traction Device

Each track driven by 2-speed axial piston motor through planetary reduction gear for counterrotation of the tracks. Sprockets are replaceable. Parking brake is spring-set/hydraulic-released disc type. Travel shockless relief valve built in travel motor absorbs shocks when stopping travel.

Automatic transmission system: High—Medium.

Travel speed High: 0 to 5.5 km/h (3.4 mph)

..... Medium: 0 to 3.5 km/h (2.2 mph)

..... Low: 0 to 2.2 km/h (1.4 mph)

Maximum traction force 176.5 kN (18 000 kgf, 39 700 lbf)

Gradeability 35° (70%) continuous

WEIGHTS AND GROUND PRESSURE

Equipped with 6.00 m (19'8") boom, 2.96 m (9'9") arm and 1.05 m³ (1.37 yd³: PCSA heaped) bucket.

Shoe type	Shoe width	Operating weight	Ground pressure
Triple grouser	600 mm (24")	22 500 kg (49 600 lb)	48.1 kPa (0.49 kgf/cm ² , 6.97 psi)
		23 100 kg (50 900 lb)	45.1 kPa (0.46 kgf/cm ² , 6.54 psi)
	800 mm (31")	23 100 kg (50 900 lb)	36.3 kPa (0.37 kgf/cm ² , 5.26 psi)
		23 800 kg (52 500 lb)	35.3 kPa (0.36 kgf/cm ² , 5.12 psi)
Triangular	900 mm (35")	23 900 kg (52 700 lb)	34.3 kPa (0.35 kgf/cm ² , 4.98 psi)
		24 700 kg (54 500 lb)	32.4 kPa (0.33 kgf/cm ² , 4.69 psi)
Flat	600 mm (24")	23 400 kg (51 600 lb)	48.1 kPa (0.49 kgf/cm ² , 6.97 psi)
		23 700 kg (52 300 lb)	46.1 kPa (0.47 kgf/cm ² , 6.68 psi)

Values in are data on the EX220LC-3.

Operating weight is the total weight of the basic machine plus 5 050 kg (11 100 lb) counterweight and triple grouser shoes, excluding front-end attachment.

EX220-3	18 100 kg (39 900 lb)
	with 600 mm (24") shoes
EX220LC-3	19 400 kg (42 800 lb)
	with 800 mm (31") shoes

Buckets

Capacity		Width		No. of teeth	Weight	Recommendation					
PCSA heaped	CECE heaped	without side cutters	With side cutters			EX220-3			EX220LC-3		
						2.32 m (7'7") arm	2.96 m (9'9") arm	3.61 m (11'10") arm	2.32 m (7'7") arm	2.96 m (9'9") arm	3.61 m (11'10") arm
0.80 m ³ (1.05 yd ³)	0.70 m ³	940 mm (37")	1 080 mm (43")	4	700 kg (1 550 lb)	⊙	⊙	⊙	⊙	⊙	⊙
1.05 m ³ (1.37 yd ³)	0.90 m ³	1 160 mm (46")	1 300 mm (51")	5	820 kg (1 810 lb)	⊙	⊙	○	⊙	⊙	⊙
1.15 m ³ (1.50 yd ³)	1.00 m ³	1 270 mm (50")	1 410 mm (56")	5	870 kg (1 920 lb)	○	○	□	○	○	○
1.25 m ³ (1.63 yd ³)	1.10 m ³	1 380 mm (54")	1 520 mm (60")	5	920 kg (2 030 lb)	○	○	—	○	○	□
1.40 m ³ (1.83 yd ³)	1.20 m ³	1 490 mm (59")	—	5	890 kg (1 960 lb)	□	—	—	□	—	—
1.92 m ³ (2.50 yd ³)	0.80 m ³	1 120 mm (44")	—	5	1 000 kg (2 210 lb)	●	●	⊙	●	●	⊙
Ripper bucket: 0.70 m ³ (0.92 yd ³ : CECE heaped) Width 1 000 mm (39")				3	1 210 kg (2 670 lb)	●	●	—	●	●	—
One-point ripper				1	680 kg (1 500 lb)	●	●	—	●	●	—

* Rock bucket

- ⊙ Suitable for materials with density of 2 000 kg/m³ (3 370 lb/yd³) or less
- Suitable for materials with density of 1 600 kg/m³ (2 700 lb/yd³) or less
- Suitable for materials with density of 1 100 kg/m³ (1 850 lb/yd³) or less
- Heavy-duty service
- Not recommended



SERVICE REFILL CAPACITIES

	liters	US gal	Imp gal
Fuel tank	310.0	81.9	68.2
Engine coolant	27.0	7.1	5.9
Engine oil	26.0	6.9	5.7
Swing mechanism	13.2	3.5	2.9
Travel final device	6.5	1.7	1.4
(each side)			
Hydraulic system	260.0	68.7	57.2
Hydraulic tank	140.0	37.0	30.8

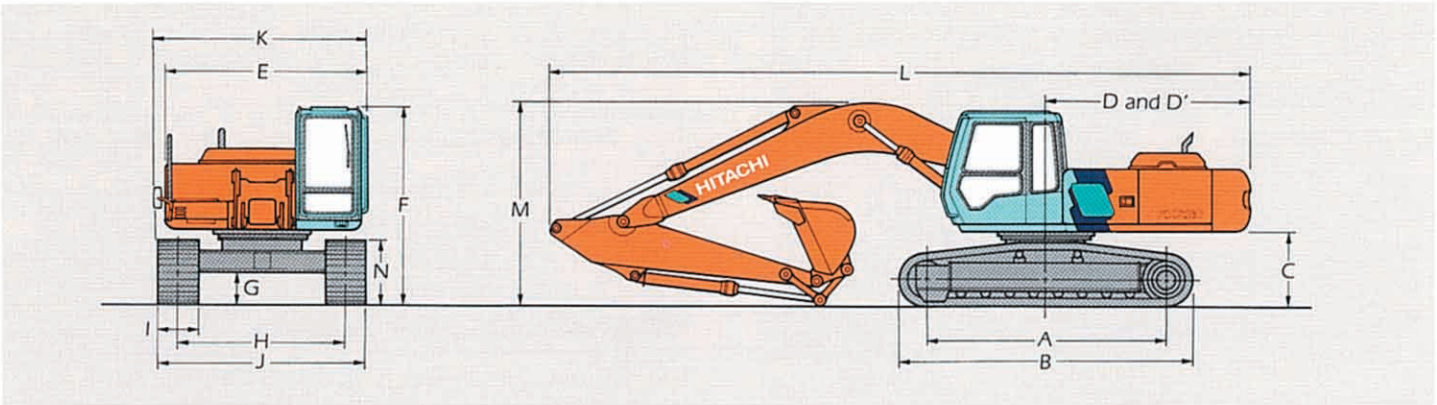


BACKHOE ATTACHMENTS

Boom and arms are of welded, box-section design. 6.00 m (19'8") boom, and 2.32 m (7'7"), 2.96 m (9'9") and 3.61 m (11'10") arms are available.

Bucket is of welded steel structure. Side clearance adjust mechanism provided on the bucket joint bracket.

DIMENSIONS



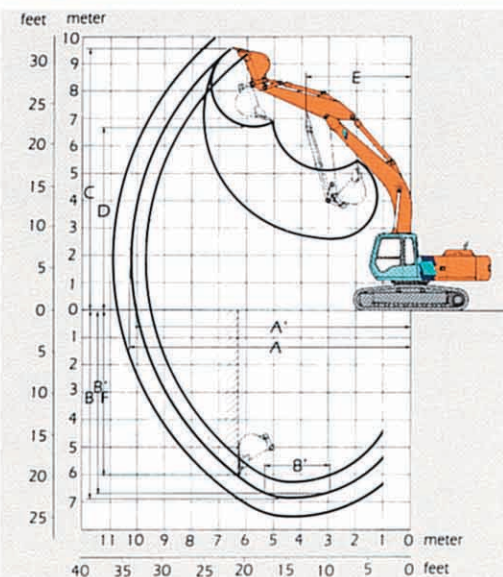
	EX220-3			EX220LC-3		
A Distance between tumbler	3 460 mm (11'4")			3 840 mm (12'7")		
B Undercarriage length	4 260 mm (14'0")			4 640 mm (15'3")		
*C Counterweight clearance	1 090 mm (3'7")			1 090 mm (3'7")		
D Rear-end swing radius	2 940 mm (9'8")			2 940 mm (9'8")		
D' Rear-end length	2 940 mm (9'8")			2 940 mm (9'8")		
E Overall width of upperstructure	2 870 mm (9'5")			2 870 mm (9'5")		
F Overall height of cab	2 920 mm (9'7")			2 920 mm (9'7")		
*G Min. ground clearance	460 mm (1'6")			460 mm (1'6")		
H Track gauge	2 390 mm (7'10")			2 590 mm (8'6")		
I Track shoe width	G600 mm (24")	G800 mm (31")	T900 mm (35")	G600 mm (24")	G800 mm (31")	T900 mm (35")
J Undercarriage width	2 990 mm (9'10")	3 190 mm (10'6")	3 290 mm (10'10")	3 190 mm (10'6")	3 390 mm (11'1")	3 490 mm (11'5")
K Overall width	2 990 mm (9'10")	3 190 mm (10'6")	3 290 mm (10'10")	3 190 mm (10'6")	3 390 mm (11'1")	3 490 mm (11'5")
L Overall length						
With 2.32 m (7'7") arm	10 260 mm (33'8")			10 260 mm (33'8")		
With 2.96 m (9'9") arm	10 120 mm (33'2")			10 120 mm (33'2")		
With 3.61 m (11'10") mm arm	10 180 mm (33'5")			10 180 mm (33'5")		
M Overall height of boom						
With 2.32 m (7'7") arm	3 250 mm (10'8")			3 250 mm (10'8")		
With 2.96 m (9'9") arm	3 040 mm (10'0")			3 040 mm (10'0")		
With 3.61 m (11'10") arm	3 270 mm (10'9")			3 270 mm (10'9")		
N Track height						
With triple grouser shoes	945 mm (3'1")			945 mm (3'1")		

* Excluding track shoe lug.

G: Triple grouser shoe

T: Triangular shoe

WORKING RANGES



	EX220-3/EX220LC-3		
Arm length	2.32 m (7'7")	2.96 m (9'9")	3.61 m (11'10")
A Max. digging reach	9 710 mm (31'10")	10 270 mm (33'8")	10 900 mm (35'9")
A' Max. digging reach (on ground)	9 530 mm (31'3")	10 100 mm (33'2")	10 730 mm (35'2")
B Max. digging depth	6 310 mm (20'8")	6 950 mm (22'10")	7 600 mm (24'11")
B' Max. digging depth (8' level)	6 070 mm (19'11")	6 740 mm (22'1")	7 430 mm (24'5")
C Max. cutting height	9 410 mm (30'10")	9 630 mm (31'7")	9 980 mm (32'9")
D Max. dumping height	6 530 mm (21'5")	6 760 mm (22'2")	7 100 mm (23'4")
E Min. swing radius	3 920 mm (12'10")	3 850 mm (12'8")	3 880 mm (12'9")
F Max. vertical wall	5 400 mm (17'9")	6 030 mm (19'9")	6 740 mm (22'1")
Bucket digging force	136.3 kN (13 900 kgf, 30 600 lbf)	136.3 kN (13 900 kgf, 30 600 lbf)	136.3 kN (13 900 kgf, 30 600 lbs)
Arm crowd force	132.4 kN (13 500 kgf, 29 800 lbf)	105.9 kN (10 800 kgf, 23 800 lbf)	92.2 kN (9 400 kgf, 20 700 lbf)

Excluding track shoe lug.



STANDARD EQUIPMENT

Standard equipment may vary by country, so please consult your Hitachi dealer for details.

ENGINE

- 35 A alternator
- Dry-type air filter with evacuator valve (with safety element)
- Cartridge-type engine oil filter
- Cartridge-type engine oil bypass filter
- Cartridge type fuel filter
- Radiator and oil cooler with dust protective net
- Radiator reserve tank
- Fan guard
- Isolation-mounted engine
- Auto-idling system

HYDRAULIC SYSTEM

- Load-sensing system
- Flow dividing control system
- Work mode selector
- Engine speed sensing system
- E-P control system (power mode selector)
- FPS
- Hydraulic warm-up control system for hydraulic oil
- Quick warm-up system for pilot circuit
- Shockless valve in pilot circuit
- Swing cushion valve in swing circuit

- Accumulator in pilot circuit
- Boom-arm holding valve
- Control valve with main relief valve
- Extra port for control valve
- Suction filter
- Full-flow filter
- Pilot filter

CAB

All-weather sound-suppressed steel cab equipped with reinforced, tinted (bronze color) glass windows, openable front windows-upper with assist spring, and lower and both side windows with intermittent windshield wipers, front window washer, curved rear window, adjustable suspension seat with adjustable armrests, footrest, electric double horn, auto-tuning radio with digital clock, auto-idle switch, seat belt, cigarette lighter, ashtray, parcel pocket, rear tray, floor mat, heater, and pilot control shut-off lever.

MONITOR SYSTEM

- Meters:
 - Hourmeter, engine coolant temperature gauge and fuel meter.

- Warning lamps:
 - Alternator charge, engine oil pressure, engine overheat, air cleaner clog and minimum fuel level.
- Pilot lamps:
 - Engine preheat, engine oil level, engine coolant level and hydraulic oil level
- Alarm buzzers:
 - Engine oil pressure and engine overheat.

LIGHTS

- 2 working lights and 1 cab light

UPPERSTRUCTURE

- Undercover
- 5 050 kg (11 100 lb) counterweight
- Fuel level gauge
- Hydraulic oil level gauge
- Tool box
- Utility space
- Rearview mirror (right side)
- Swing parking brake

UNDERCARRIAGE

- Travel parking brake
- Travel motor covers
- Track guards and hydraulic track adjuster
- Bolt-on sprocket
- Upper rollers and lower rollers
- Reinforced track links with pin seals
- 600 mm (24 ") triple grouser shoes:
 - EX220-3 and EX220LC-3

FRONT ATTACHMENTS

- Bucket clearance adjust mechanism
- Monolithically cast bucket link A
- Centralized lubrication system
- Dirt seals on all bucket pins
- 2.96 m (9'9 ") arm
- 1.05 m³ (1.37 yd³):PCSA heaped bucket

MISCELLANEOUS

- Standard tool kit
- Lockable machine covers
- Lockable fuel filling cap
- Skid-resistant tapes and handrails.



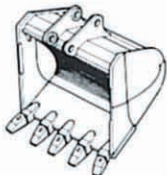
OPTIONAL EQUIPMENT

Optional equipment may vary by country, so please consult your Hitachi dealer for details.

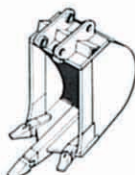
- Air conditioner
- Multi selection lever with rotary valve
- Hose rupture valves
- Electric fuel refilling pump
- Swing motion alarm device with lamps
- Travel motion alarm device
- Additional pump
- Piping kit for extra port
- PTO valve & Additional valve with piping kit

- Rock bucket for hard, rocky ground
- Ripper bucket for ripping and loading hardpan
- One-point ripper for ripping hardpan

Type of Bucket



Rock bucket

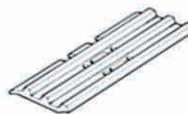


Ripper bucket



One-point ripper

Type of Shoe



Triple grouser shoe
800 mm (31 ")

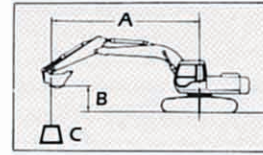


Flat shoe
600 mm (24 ")



Triangular shoe
900 mm (35 ")

LIFTING CAPACITIES



A: Load radius
B: Load point height
C: Lifting capacity

METRIC MEASURE

EX220-3

Rating over-side or 360 degrees

Rating over-front

Unit: 1 000 kg (1 000 lb)

Conditions	Load point height m (ft in)	Load radius												At max. reach						
		m (ft in)																		
		3 (9'10")	4 (13'1")	5 (16'5")	6 (19'8")	7 (23'0")	8 (26'3")	9 (29'6")	360°	Front	Side	360°	Front	Side						
Boom 6.00 m (19'8") Arm 2.32 m (7'7") Bucket PCSA: 1.05 m ³ (1.37 yd ³) CECE: 0.90 m ³ Shoes 600 mm (24")	6 (19'8")							*4.50 (9.92)	*4.50 (9.92)	3.86 (8.51)	*4.28 (9.44)						2.73 (6.02)	*3.75 (8.27)	8.45 (27'9")	
	4 (13'1")							*6.18 (13.6)	*6.18 (13.6)	4.85 (10.7)	*5.40 (11.9)	*4.96 (10.9)	2.88 (6.35)	4.35 (9.59)			2.23 (4.92)	3.43 (7.56)	9.14 (30'0")	
	2 (6'7")							5.76 (12.7)	*8.74 (19.3)	4.39 (9.68)	6.71 (14.8)	3.43 (7.56)	5.23 (11.5)	2.73 (6.02)	4.19 (9.24)		2.06 (4.54)	3.23 (7.12)	9.29 (30'6")	
	0 (Ground)							5.38 (11.9)	8.55 (18.9)	4.08 (9.00)	6.37 (14.0)	3.22 (7.10)	4.99 (11.0)	2.59 (5.71)	4.04 (8.91)		2.16 (4.76)	3.40 (7.50)	8.92 (29'3")	
	-2 (-6'7")			7.82 (17.2)	*11.0 (24.3)	5.36 (11.8)	8.52 (18.8)	4.01 (8.84)	6.28 (13.8)	3.15 (6.95)	4.92 (10.8)	2.56 (5.64)	4.01 (8.84)							
	-4 (-13'1")	*11.9 (26.2)	*11.9 (26.2)	8.03 (17.7)	*10.1 (22.3)	5.53 (12.2)	*8.50 (18.7)	4.14 (9.13)	6.43 (14.2)											
Boom 6.00 m (19'8") Arm 2.96 m (9'9") Bucket PCSA: 1.05 m ³ (1.37 yd ³) CECE: 0.90 m ³ Shoes 600 mm (24")	6 (19'8")									*3.92 (8.64)	*3.92 (8.64)						2.39 (5.27)	*2.41 (5.31)	9.07 (29'9")	
	4 (13'1")									*4.77 (10.5)	*4.77 (10.5)	3.79 (8.36)	*4.46 (9.83)	2.94 (6.48)	*4.28 (9.44)		1.98 (4.37)	*2.48 (5.47)	9.71 (31'10")	
	2 (6'7")							5.98 (13.2)	*7.90 (17.4)	4.50 (9.92)	*6.35 (14.0)	3.49 (7.70)	5.29 (11.7)	2.75 (6.06)	4.22 (9.31)	2.19 (4.83)	3.42 (7.54)	1.83 (4.04)	*2.72 (6.00)	9.85 (32'4")
	0 (Ground)			*5.47 (12.1)	*5.47 (12.1)	5.45 (12.0)	8.62 (19.0)	4.12 (9.08)	6.42 (14.2)	3.23 (7.12)	5.01 (11.0)	2.58 (5.69)	4.03 (8.89)	2.09 (4.61)	3.31 (7.30)	1.90 (4.19)	3.03 (6.68)	3.03 (6.68)	9.51 (31'2")	
	-2 (-6'7")	*7.02 (15.5)	*7.02 (15.5)	7.69 (17.0)	*12.4 (27.3)	5.32 (11.7)	8.48 (18.7)	3.98 (8.78)	6.26 (13.8)	3.11 (6.86)	4.88 (10.8)	2.50 (5.51)	3.95 (8.71)				2.26 (4.98)	3.56 (7.85)	8.62 (28'3")	
	-4 (-13'1")	13.3 (29.3)	*13.8 (30.4)	7.88 (17.4)	*11.2 (24.7)	5.42 (12.0)	8.59 (18.9)	4.04 (8.91)	6.32 (13.9)	3.17 (6.99)	4.94 (10.9)									
Boom 6.00 m (19'8") Arm 3.61 m (11'10") Bucket PCSA: 1.05 m ³ (1.37 yd ³) CECE: 0.90 m ³ Shoes 600 mm (24")	6 (19'8")																*1.83 (4.04)	*1.83 (4.04)	9.76 (32'0")	
	4 (13'1")																1.69 (3.73)	*1.87 (4.12)	10.3 (33'10")	
	2 (6'7")																1.57 (3.46)	*2.04 (4.50)	10.5 (34'5")	
	0 (Ground)																1.61 (3.55)	*2.37 (5.23)	10.2 (33'6")	
	-2 (-6'7")	*6.39 (14.1)	*6.39 (14.1)	7.54 (16.6)	*11.3 (24.9)	5.23 (11.5)	8.39 (18.5)	3.90 (8.60)	6.18 (13.6)	3.04 (6.70)	4.81 (10.6)	2.42 (5.34)	3.87 (8.53)	1.97 (4.34)	3.19 (7.03)	1.88 (4.15)	*3.00 (6.62)	9.35 (30'8")		
	-4 (-13'1")	13.0 (28.7)	*13.1 (28.9)	7.65 (16.9)	*11.8 (26.0)	5.25 (11.6)	8.42 (18.6)	3.90 (8.60)	6.18 (13.6)	3.03 (6.68)	4.80 (10.6)	2.44 (5.38)	3.89 (8.58)							
	-6 (-19'8")	*11.4 (25.1)	*11.4 (25.1)	8.02 (17.7)	*9.13 (20.1)	5.52 (12.2)	*7.41 (16.3)	4.13 (9.11)	*5.91 (13.0)											

- Notes:
1. Ratings are based on SAE J1097.
 2. Lifting capacity of the Super EX Series does not exceed 75% of tipping load with the machine on firm level ground or 87% full hydraulic capacity.
 3. The load point is a hook (not standard equipment) loaded on the back of the bucket.
 4. *Indicates load limited by hydraulic capacity.

METRIC MEASURE

EX220LC-3



Rating over-side or 360 degrees



Rating over-front

Unit: 1 000 kg (1 000 lb)

Conditions	Load point height m (ft in)	Load radius												At max. reach						
		m (ft in)																		
		3 (9'10")		4 (13'1")		5 (16'5")		6 (19'8")		7 (23'0")		8 (26'3")		9 (29'6")		⊗	⊞	m @ft in		
Boom 6.00m (19'8") Arm 2.32m (7'7") Bucket PCSA: 1.05 m ³ (1.37 yd ³) CECE: 0.90 m ³ Shoes 800 mm (31")	6 (19'8")							*4.50 (9.92)	*4.50 (9.92)	*4.28 (9.44)	*4.28 (9.44)						3.18 (7.01)	*3.75 (8.27)	8.45 (27'9")	
	4 (13'1")					*6.18 (13.6)	*6.18 (13.6)	*5.40 (11.9)	*5.40 (11.9)	4.30 (9.48)	*4.96 (10.9)	3.37 (7.43)	*4.76 (10.5)				2.63 (5.80)	*3.84 (8.47)	9.14 (30'0")	
	2 (6'7")					6.73 (14.8)	*8.74 (19.3)	5.12 (11.3)	*6.89 (15.2)	4.01 (8.84)	*5.87 (12.9)	3.21 (7.08)	5.15 (11.4)				2.46 (5.42)	4.01 (8.84)	9.29 (30'6")	
	0 (Ground)					6.34 (14.0)	*10.0 (22.1)	4.08 (9.06)	7.92 (17.5)	3.79 (8.36)	6.18 (13.6)	3.07 (6.77)	5.00 (11.0)				2.58 (5.69)	4.22 (9.31)	8.92 (29'3")	
	-2 (-6'7")			9.23 (20.4)	*11.0 (24.3)	6.31 (13.9)	*9.85 (21.7)	4.73 (10.4)	7.83 (17.3)	3.72 (8.20)	6.11 (13.5)	3.04 (6.70)	4.97 (11.0)							
	-4 (-13'1")	*11.9 (26.2)	*11.9 (26.2)	9.45 (20.8)	*10.1 (22.3)	6.48 (14.3)	*8.50 (18.7)	4.86 (10.7)	7.03 (15.5)											
Boom 6.00m (19'8") Arm 2.96m (9'9") Bucket PCSA: 1.05 m ³ (1.37 yd ³) CECE: 0.90 m ³ Shoes 800 mm (31")	6 (19'8")									*3.92 (8.64)	*3.92 (8.64)						*2.41 (5.31)	*2.41 (5.31)	9.07 (29'9")	
	4 (13'1")							5.72 (12.6)	*4.77 (10.5)	4.38 (9.66)	*4.46 (9.83)	3.43 (7.56)	*4.28 (9.44)				2.35 (5.18)	*2.48 (5.47)	9.71 (31'10")	
	2 (6'7")					6.95 (15.3)	*7.90 (17.4)	5.23 (11.5)	*6.35 (14.0)	4.07 (8.97)	*5.46 (12.0)	3.24 (7.14)	*4.90 (10.8)	2.60 (5.73)	*4.04 (8.91)	2.20 (4.85)	*2.72 (6.00)	9.85 (32'4")		
	0 (Ground)			*5.47 (12.1)	*5.47 (12.1)	6.40 (14.1)	*9.71 (21.4)	4.85 (10.7)	*7.67 (16.9)	3.81 (8.40)	6.21 (13.7)	3.06 (6.75)	5.00 (11.0)	2.50 (5.51)	4.12 (9.08)	2.28 (5.03)	*3.17 (6.99)	9.51 (31'2")		
	-2 (-6'7")	*7.02 (15.5)	*7.02 (15.5)	9.10 (20.1)	*12.4 (27.3)	6.27 (13.8)	*10.0 (22.1)	4.70 (10.4)	7.80 (17.2)	3.69 (8.14)	6.07 (13.4)	2.98 (6.57)	4.91 (10.8)				2.70 (5.95)	*4.05 (8.93)	8.62 (28'3")	
	-4 (-13'1")	*13.8 (30.4)	*13.8 (30.4)	9.29 (20.5)	*11.2 (24.7)	6.37 (14.0)	*9.12 (20.1)	4.76 (10.5)	*7.52 (16.6)	3.74 (8.25)	6.13 (13.5)									
Boom 6.00m (19'8") Arm 3.61m (11'10") Bucket PCSA: 1.05 m ³ (1.37 yd ³) CECE: 0.90 m ³ Shoes 800 mm (31")	6 (19'8")											*3.04 (6.70)	*3.04 (6.70)				*1.83 (4.04)	*1.83 (4.04)	9.76 (32'0")	
	4 (13'1")									*3.88 (8.56)	*3.88 (8.56)	3.45 (7.61)	*3.77 (8.31)	2.72 (6.00)	*3.10 (6.84)	*1.87 (4.12)	*1.87 (4.12)	10.3 (33'10")		
	2 (6'7")			*9.30 (20.5)	*9.30 (20.5)	*6.92 (15.3)	*6.92 (15.3)	5.31 (11.7)	*5.69 (12.5)	4.10 (9.04)	*4.95 (10.9)	3.24 (7.14)	*4.47 (9.86)	2.59 (5.71)	*4.08 (9.00)	1.91 (4.21)	*2.04 (4.50)	10.5 (34'5")		
	0 (Ground)			9.13 (20.1)	*7.54 (16.6)	6.43 (14.2)	*9.13 (20.1)	4.85 (10.7)	*7.21 (15.9)	3.79 (8.36)	*6.00 (13.2)	3.03 (6.68)	4.97 (11.0)	2.45 (5.40)	4.08 (9.00)	1.96 (4.32)	*2.37 (5.23)	10.2 (33'6")		
	-2 (-6'7")	*6.39 (14.1)	*6.39 (14.1)	8.94 (19.7)	*11.3 (24.9)	6.18 (13.6)	*9.92 (21.9)	4.62 (10.2)	7.73 (17.0)	3.61 (7.96)	6.00 (13.2)	2.90 (6.39)	4.83 (10.7)	2.38 (5.25)	4.00 (8.82)	2.27 (5.01)	*3.00 (6.62)	9.35 (30'8")		
	-4 (-13'1")	*13.1 (28.9)	*13.1 (28.9)	9.06 (20.0)	*11.8 (26.0)	6.21 (13.7)	*9.47 (20.9)	4.62 (10.2)	7.75 (17.1)	3.61 (7.96)	5.99 (13.2)	2.92 (6.44)	4.85 (10.7)							
	-6 (-19'8")	*11.4 (25.1)	*11.4 (25.1)	*9.13 (20.1)	*9.13 (20.1)	6.48 (14.3)	*7.41 (16.3)	4.85 (10.7)	*5.91 (13.0)											

- Notes:
1. Ratings are based on SAE J1097.
 2. Lifting capacity of the Super EX Series does not exceed 75% of tipping load with the machine on firm, level ground or 87% full hydraulic capacity.
 3. The load point is a hook (not standard equipment) loaded on the back of the bucket.
 4. *Indicates load limited by hydraulic capacity.