

HITACHI

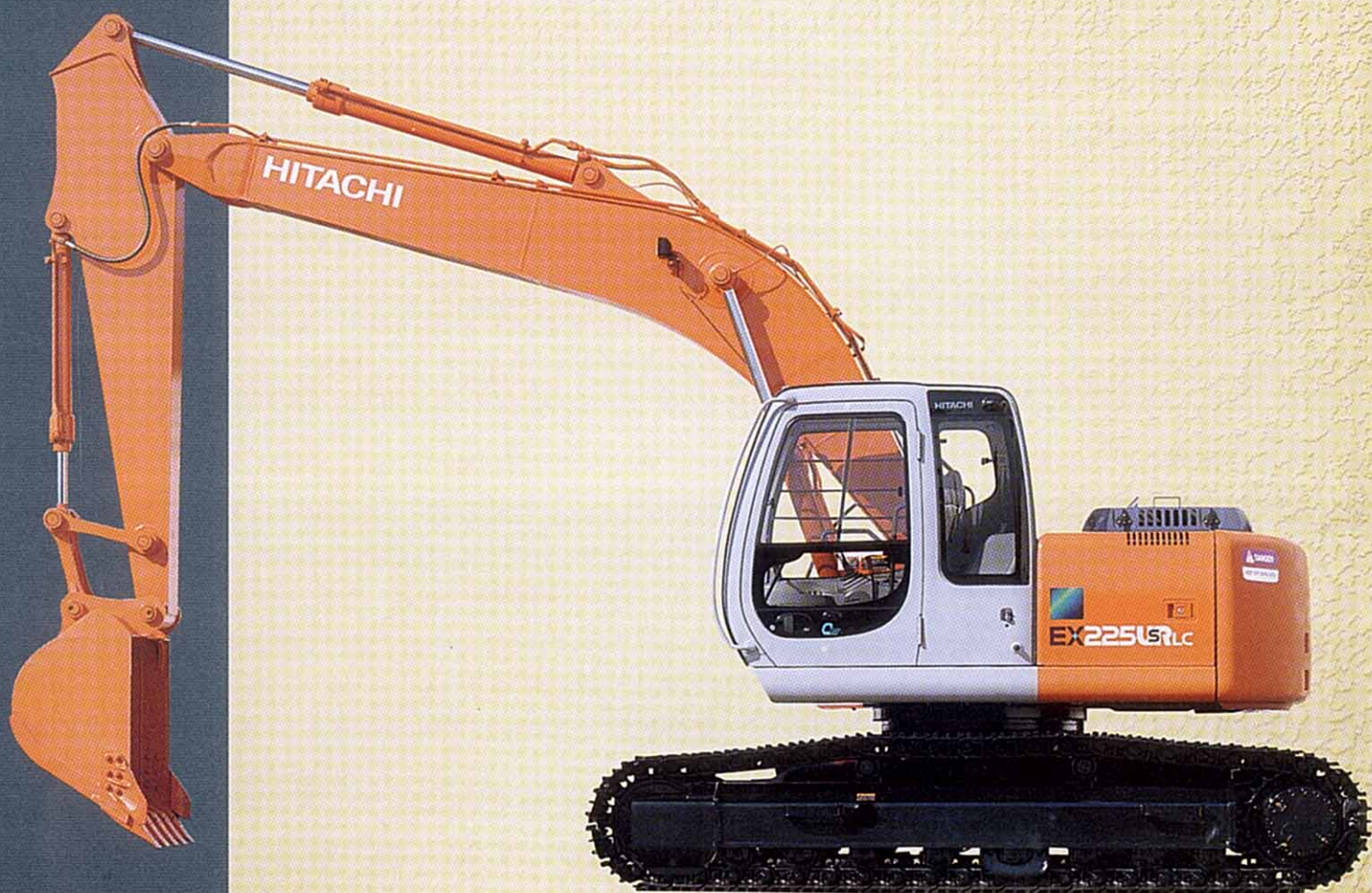
SuperEX *V*

EX225UR

Rated Engine HP: 99 kW (135 PS)

Operating Weights EX225UR : 21 700 kg (47 800 lb)
EX225UR_{LC} : 22 500 kg (49 600 lb)

Bucket Capacity PCSA Heaped : 0.51–1.10 m³ (0.67–1.44 yd³)
CECE Heaped : 0.45–0.90 m³



The short Rear-end Swing Radius Allows the EX225USR to Work in Confined Sites Where No 20ton-class Machines Were Usable!

If you are compelled to use 10ton- or 12ton-class machines for confined area reason, replace them with new 20ton-class machine — the EX225USR.

Rear-end swing radius of short 2 000 mm (6'7")

The rear-end swing radius is only 2 000 mm (6'7"), which is shorter than the 2 130 mm (7'0") of 10ton-class machines (EX100-5).

Enhanced stability

Stability is ensured by a heavy counterweight and a undercarriage using components from the next higher class.

Variety of options

A large lineup of options includes a blade and piping kits for breaker, crusher, etc., expanding the range of applications.

Low-noise design

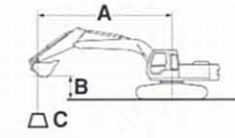
The EX225USR mounts a low-noise engine. In addition, noise is reduced by mounting a new hydraulic pump, Y-shaped fan, and bell-mouse fan shroud.

Roomy cab with wide visibility

The operator's cab is spacious, with ample space for legs. The retractable wiper and large overhead window help increase visibility.



LIFTING CAPACITIES



A: Load radius
B: Load point height
C: Lifting capacity



Rating over-side or 360 degrees



Rating over-front

Unit: 1 000 kg

EX225USR

Conditions	Load point height	Load radius						At max. reach								
		3 m (9'10")	4 m (13'2")	5 m (16'5")	6 m (19'8")	7 m (23')	8 m (26'2")	meter	meter (ft in)							
Boom 5.68 m (18'8")	6 m (19'8")							*3.30 (7.3)	*3.30 (7.3)	*1.95 (4.3)	*1.95 (4.3)	8.61 (28'3")				
Arm 2.91 m (9'7")	4 m (13'2")							*4.12 (9.1)	*4.12 (9.1)	3.26 (7.2)	*3.94 (8.7)	2.55 (5.6)	*3.50 (7.7)	1.92 (4.2)	*1.96 (4.3)	9.36 (30'9")
Bucket	2 m (6'7")															
PCSA 0.80 m³ (1.05 yd³)	0 (ground)		7.27 (16.0)	*8.61 (19.0)	5.21 (11.5)	*6.45 (14.2)	3.93 (8.7)	*5.35 (11.8)	3.07 (6.8)	*4.70 (10.4)	2.44 (5.4)	3.99 (8.8)	1.77 (3.9)	*2.09 (4.6)	9.57 (31'5")	
CECE 0.70 m³	-2 m (-6'7")	*7.12 (15.7)	*7.12 (15.7)	6.61 (14.6)	*10.84 (23.9)	4.66 (10.3)	7.96 (17.5)	3.54 (7.8)	5.94 (13.1)	2.80 (6.2)	4.68 (10.3)	2.28 (5.0)	3.82 (8.4)	2.12 (4.7)	*2.99 (6.6)	8.46 (27'9")
Shoe 600 mm (24")	-4 m (-13'2")	11.05 (24.4)	*12.11 (26.7)	6.74 (14.9)	*9.61 (21.2)	4.73 (10.4)	*7.76 (17.1)	3.58 (7.9)	5.99 (13.2)	2.86 (6.3)	4.75 (10.5)					

EX225USRLc

Conditions	Load point height	Load radius						At max. reach								
		3 m (9'10")	4 m (13'2")	5 m (16'5")	6 m (19'8")	7 m (23')	8 m (26'2")	meter	meter (ft in)							
Boom 5.68 m (18'8")	6 m (19'8")							*3.30 (7.3)	*3.30 (7.3)	*1.95 (4.3)	*1.95 (4.3)	8.61 (28'3")				
Arm 2.91 m (9'7")	4 m (13'2")							*4.12 (9.1)	*4.12 (9.1)	3.66 (8.1)	*3.94 (8.7)	2.88 (6.3)	*3.50 (7.7)	*1.96 (4.3)	*1.96 (4.3)	9.36 (30'9")
Bucket	2 m (6'7")															
PCSA 0.80 m³ (1.05 yd³)	0 (ground)		8.24 (18.2)	*8.61 (19.0)	5.87 (12.9)	*6.45 (14.2)	4.43 (9.8)	*5.35 (11.8)	3.46 (7.6)	*4.70 (10.4)	2.77 (6.1)	*4.30 (9.5)	2.03 (4.5)	*2.09 (4.6)	9.57 (31'5")	
CECE 0.70 m³	-2 m (-6'7")	*7.12 (15.7)	*7.12 (15.7)	7.56 (16.7)	*10.84 (23.9)	5.31 (11.7)	*8.52 (18.8)	4.02 (8.9)	6.87 (15.1)	3.19 (7.0)	5.39 (11.9)	2.60 (5.7)	4.40 (9.7)	2.43 (5.4)	*2.99 (6.6)	8.46 (27'9")
Shoe 600 mm (24")	-4 m (-13'2")	*12.11 (26.7)	*12.11 (26.7)	7.69 (17.0)	*9.61 (21.2)	5.38 (11.9)	*7.76 (17.1)	4.07 (9.0)	*6.33 (14.0)	3.25 (7.2)	*5.06 (11.2)					

Notes: 1. Ratings are based on SAE J1097

2. Lifting capacity of the EX Series does not exceed 75% of tipping load with the machine on firm, level ground or 87% full hydraulic capacity.

3. The load point is hook (not standard equipment) located on the back of the bucket.

4. Asterisk mark (*) indicates load limited by hydraulic capacity.

BUCKETS

Capacity		Width		No. of teeth	Weight kg (lb)	Recommendation EX225USR/EX225USRLc 2.91 m (9'7") arm
PCSA heaped m³ (yd³)	CECE heaped m³	Without side cutters mm (in)	With side cutters mm (in)			
0.51 (0.67)	0.45	720 (28)	850 (33)	3	520 (1 150)	○
0.80 (1.05)	0.70	1 030 (41)	1 140 (45)	5	670 (1 480)	○
0.91 (1.19)	0.80	1 150 (45)	1 280 (50)	5	700 (1 540)	○/○
1.10 (1.44)	0.90	1 330 (52)	1 460 (58)	6	760 (1 680)	-/○
*0.80 (1.05)	0.70	1 030 (41)	1 140 (45)	5	770 (1 700)	○
*0.91 (1.19)	0.80	1 150 (45)	1 280 (50)	5	810 (1 790)	○/○
V-shaped bucket: 0.40 m³, Side plate inclination: 45°				3	530 (1 170)	○
Clamshell bucket: 0.60 m³, Width 940 mm				8	1 240 (2 730)	○
Slope-finishing blade: Width 1 100 mm (43"), length 2 200 mm (87")					690 (1 520)	◇

*Reinforced bucket

○ Suitable for materials with density of 2 000 kg/m³ (3 370 lb/yd³) or less

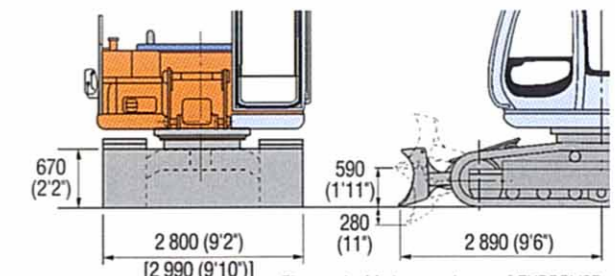
○ Suitable for materials with density of 1 600 kg/m³ (2 700 lb/yd³) or less

◇ Slope-finishing service

- Not recommended

BLADE (option)

	EX225USR	EX225USRLc
Operating weight	kg (lb) 23 200 (51 200)	24 000 (52 900)
Shoe type	600 mm (24") triple grouser shoe	
Ground pressure	kPa (kgf/cm², psi) 52 (0.53, 7.54) 50 (0.51, 7.25)	
Blade height	mm (ft in) 670 (2'2")	
width	mm (ft in) 2 800 (9'2")	2 990 (9'10")



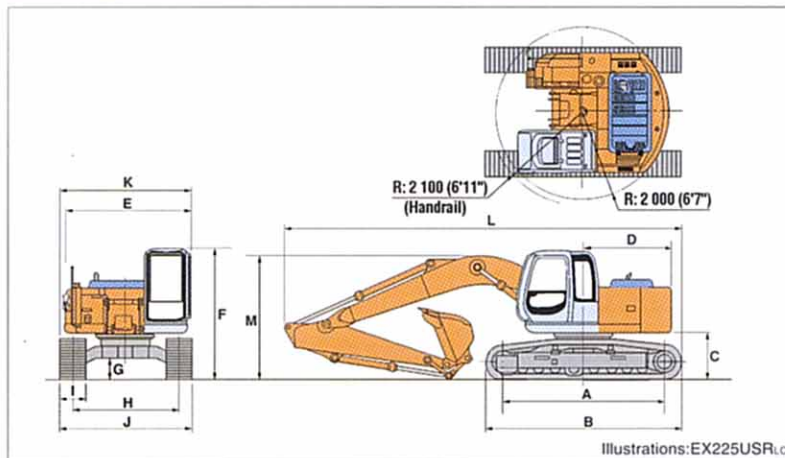
Figures in | | denote those of EX225USRLc.

SPECIFICATIONS

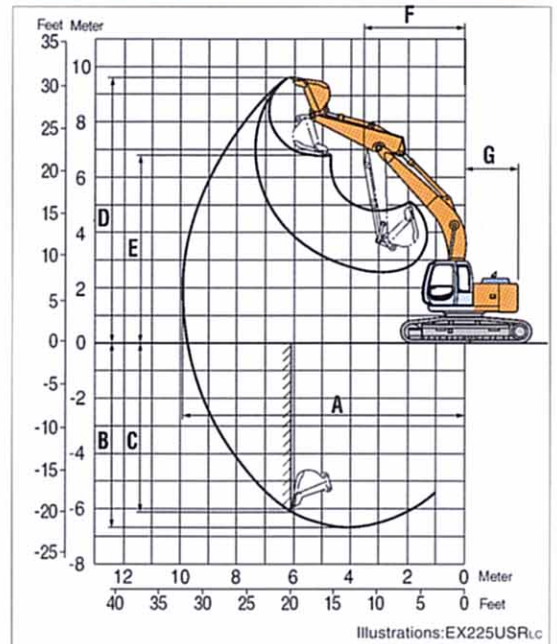
		EX225USR	EX225USRLc
Operating weight	kg (lb)	21 700 (47 800)	22 500 (49 600)
Bucket capacity CECE/PCSA (yd ³) heaped	m ³	0.70/0.80 (1.05)	
Shoe type		600 mm (24") triple grouser shoes	
Ground pressure	kPa (kgf/cm ²)	48 (0.49)	47 (0.48)
Swing speed	min ⁻¹ (rpm)	13.9	
Gradeability	deg. (%)	35° (70)	
Travel speed	High/Low km/h (mph)	5.3/3.4 (3.3/2.1)	
Bucket digging force	ISO kN (kgf, lbf)	127 (12 900, 28 400) * 134 (13 700, 30 200)	
	SAE: PCSA kN (kgf, lbf)	113 (11 500, 25 400) * 120 (12 200, 26 900)	
Arm crowd force	ISO kN (kgf, lbf)	93 (9 500, 20 900) * 99 (10 100, 22 300)	
	SAE: PCSA kN (kgf, lbf)	89 (9 100, 20 100) * 94 (9 600, 21 200)	
Engine model		Isuzu A-6BG1T	
Rated flywheel horsepower (DIN 6271, net)	kW/min ⁻¹ (PS/rpm)	STD mode: 99/1 950 (135/1 950) H/P mode: 107/2 150 (145/2 150)	
	kW/min ⁻¹ (HP/rpm)	STD mode: 98/1 950 (132/1 950) H/P mode: 105/2 150 (142/2 150)	
Hydraulic pump		2 variable displacement axial piston pumps	
Main relief valve settings	MPa (kgf/cm ² , psi)	Implement: 34.3 (350, 4 980) Travel: 34.3 (350, 4 980)	
Fuel tank capacity	L (US gal, Imp gal)	230.0 (60.8, 50.6)	
Hydraulic tank capacity	L (US gal, Imp gal)	135.0 (35.7, 29.7)	
Engine oil capacity	L (US gal, Imp gal)	25.0 (6.6, 5.5)	

* At power boost

DIMENSIONS



WORKING RANGES



5.68m (18'8") boom/2.91m (9'7") arm

	EX225USR/EX225USRLc
A Max. digging reach	9 910 mm (32'6")
B Max. digging depth	6 670 mm (21'11")
C Max. vertical wall	6 050 mm (19'10")
D Max. cutting height	9 600 mm (31'6")
E Max. dumping height	6 780 mm (22'3")
F Min. front end swing radius	3 540 mm (11'7")
G Rear-end swing radius	2 000 mm (6'7")

Excluding track shoe lug height

	EX225USR	EX225USRLc
A Distance between tumblers	3 370 (11'1")	3 660 (12'0")
B Undercarriage length	4 170 (13'8")	4 460 (14'8")
C Counterweight clearance* ¹	1 020 (3'4")	
D Rear-end length	2 000 (6'7")	
E Overall width of upperstructure	2 860 (9'5")	
F Overall height	2 940 (9'8")	
G Min. ground clearance* ¹	450 (1'6")	
H Track gauge	2 200 (7'3")	2 390 (7'10")
I Track shoe width* ²	600 (24")	
J Undercarriage width	2 800 (9'2")	2 990 (9'10")
K Overall width	2 860 (9'5")	2 990 (9'10")
L Overall length	8 865 (29'1")	9 010 (29'7")
M Overall height of boom	2 970 (9'9")	

*¹ Excluding track shoe lug height

*² Triple grouser shoe

These specifications are subject to change without notice. Illustrations and photos may or may not include optional equipment, accessories, and all standard equipment.

Hitachi Construction Machinery Co., Ltd.

Head Office: Nippon Bldg., No. 6-2, 2-chome, Ohtemachi, Chiyoda-ku, Tokyo 100-0004, Japan
 Telephone: Tokyo (03) 3245-6390
 Facsimile: Tokyo (03) 3246-2609