

ZAXIS

180 / 180 LC / LCN

- Engine Rated Power : 90.2 kW (123 PS)
- Operating Weight ZAXIS180LC : 17 800 kg
 ZAXIS180LCN : 17 500 kg
- Backhoe Bucket SAE,PCSA Heaped : 0.51—1.20 m³
 CECE Heaped : 0.45—1.00 m³



Futuristic Performance

High Productivity

A truly high-performance machine

- Wider operating range.
(Max. digging reach and Max. digging depth)
- 90.2 kW (123 PS) powerful engine.
- 116 kN (11 800 kgf) bucket digging force.
86 kN (8 780 kgf) arm crowding force.
- Good stability.

Lower Running Costs

Stronger structural component design

- Increased wear resistance of bucket joint:
WC thermal spraying.
- Reinforced D-type frame.
- New HN Bushing.

Lower Maintenance Costs

Reduced maintenance time and expense

- Extended lubrication interval at bucket joint section (Every 500 hours).
- Extended replacement interval for hydraulic oil filter (Every 1 000 hours).

CRES Cab (Center pillar Reinforced Structure)

Provides excellent operator comfort

- Low noise and low vibration in cab.

Notes :

1. Never leave the front attachment in a raised position. Make sure the front attachment is lowered to the ground before leaving the equipment unattended. (Some of the pictures in this catalog show an unmanned machine with attachments in an operating position. These were taken for demonstration purposes only and the actions shown are not recommended under normal operating conditions.)
2. Caution plates on the machine will vary according to country.
3. Photos include optional equipment.



ZAXIS180LCN:
Narrow type undercarriage
specifications



ZAXIS180LCN /
Undercarriage width: **2 490 mm**
Shoe width : 500mm

ZAXIS180LC /
Undercarriage width: **2 800 mm**
Shoe width : 600mm

Z A X I S

Smarter
&
Faster

ZAXIS uses advanced technology to reduce costs while working faster.

All Excavating Operations in a Single Mode

Simply select the "digging" mode for smooth and speedy front operations.



Wider Operating Range

Offers a wider range of operation.

Max. digging reach **9 420 mm** Max. digging depth **6 560 mm**

Increased Stability

The large undercarriage (20 ton class) help boost stability.

High Power Engine

in H/P mode **90.2 kW (123 PS)**

Excavating Power for Tough Job Site

Bucket digging force **116 kN (11 800 kgf)**

Arm crowding force **86 kN (8 780 kgf)**

Travel Power You Can Depend On

153 kN (15 600 kgf)
travel power



* Illustration shows a sample of the air flow during bi-level control.

Easy-to-Monitor Instruments

Strategically positioned instruments allow the operator to monitor the status of key areas with just a glance.

Easy-to-Operation

Switches and other essential controls are located near the operator. This helps keep operator movement to a minimum, enhancing control and helping to fight fatigue.

Auto Control Air Conditioner (Option)

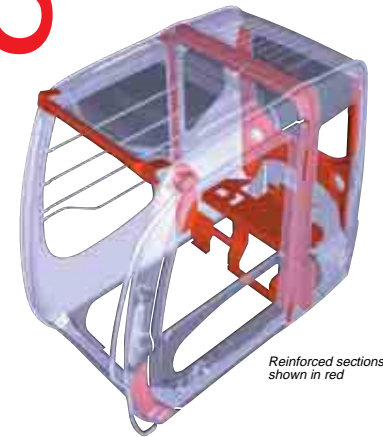
Simply set the temperature and forget about it. Ducts are positioned to promote even air flow throughout the cab.



Z A X I S

Protect & Serve

A design that both guards the operator and contributes to efficient operation.



Reinforced sections shown in red

CRES (Center pillar Reinforced Structure)

*The CRES cab meets OPG top guard level 1 (ISO).

The cab is designed with "just in case" protection for the operator. The rigid cab design can help prevent injury to the operator during an accident.



Z A X I S

Minimum Effort Maximum Efficiency

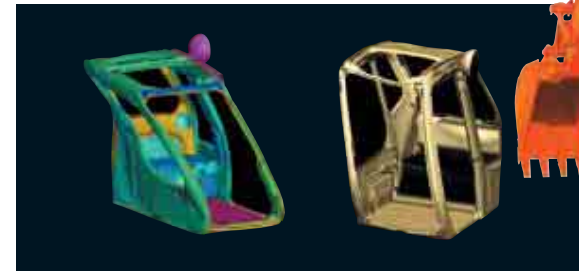
The operator's compartment is designed for both comfort and operating efficiency.



Enhanced visibility on the lower right side

Drink holder

- Storage box
- Easy-lock front window latch
- Wide and comfortable arm rests



Simulated crash deformation test



Z A X I S

Functional & Durable

Extensive steps have been taken to support basic performance and overall durability.

Lower running costs



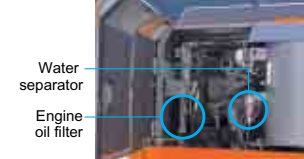
Z A X I S

Smart Savings

Advanced technology helps reduce maintenance cost.

Front and Bucket Components Only Need Lubrication Every 500 Hours

The improved HN bushings and reinforced resin thrust plates help reduce maintenance time and expense. (See the Operator's Manual)



Water separator
Engine oil filter
Engine Oil Filter and Water Separator Positioned for Easy Access from Ground



Hydraulic Oil Filter Only Needs Replacement Every 1000 Hours

The hydraulic oil filter can be used nearly twice as long as the previous model dramatically reducing maintenance time and expense.

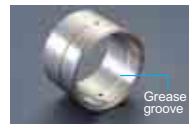


- 1 Reinforced resin thrust plates used for front sections
- 2 Reinforcing D-type frame
- 3 Reinforcing rib for door covers
- 4 Flanged pin is used for the boom/arm joint sections and the boom foot section
- 5 New HN bushing used for front sections
- 6 WC thermal spraying for arm and bucket joint sections
- 7 Bucket joint pins lubricated through bosses
- 8 Increased arm plate thickness
- 9 Increased idler bracket shape



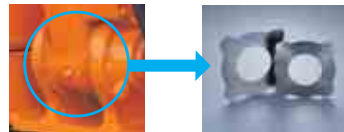
WC (Tungsten Carbide) Thermal Spraying

Used at arm end and bucket connection to increase wear resistance and reduce jerking.



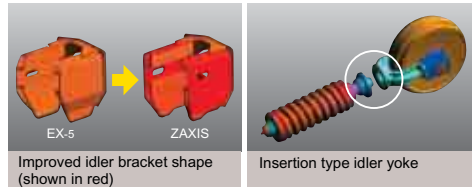
New HN Bushing

Reducing wear of pins and bushes.



Reinforced Resin Thrust Plates

Designed to reduce noise and resist wear.

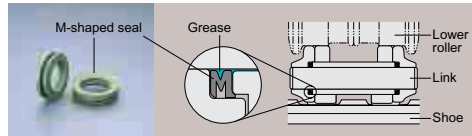


Improved idler bracket shape (shown in red)

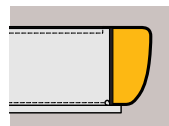
Insertion type idler yoke

Rigid Undercarriage

Strong undercarriage section for increased durability.



M-Shaped Track Link Seals Provide High Grease Retention



Reinforced D-type Frame

Rigidity of main frame on standard version is increased, support heavier front attachment and counterweight.

Aluminium Radiator, Oil Cooler and Inter-Cooler

Increased corrosion resistance.



Notes : The photo shows a cover open at the time of the inspection.
Be sure to close the cover at the time of the operation.

Z A X I S

Environmentally Friendly Design

Helping ensure a cleaner tomorrow.



Labeled Plastic Parts
The type of plastic used in various parts is imprinted on them to facilitate easy recycling.

Labeled plastic parts

Low-Noise Operation

A low-noise muffler and other such steps have been taken to reduce the amount of noise released from the engine compartment.

Emissions Control Engine

Conforms to U.S. EPA Tier 2 and EC Stage II emission regulations.

Lead-Free Wiring and Aluminium Radiator and Oil Cooler

Helps keep harmful materials out of the environment.

■ Equipment Operation Status Report

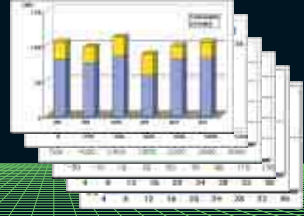


Z A X I S

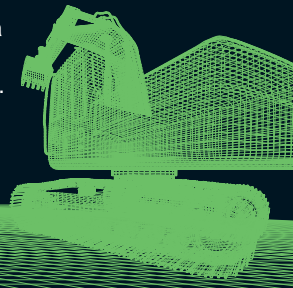
Information Technology Support

Information Services for Equipment

- Operation record
- Error record
- Alarm record
- Frequency distribution
Radiator coolant / hydraulic temperature etc. and others.



Providing the data for making the right decisions.



SPECIFICATIONS

Zaxis180LC SERIES

ENGINE

Model Isuzu AA-4BG1TCC
 Type 4-cycle water-cooled, direct injection
 Aspiration Turbocharged, intercooled
 No. of cylinders 4
 Rated power
 DIN 6271, net SAE J1349, net...H/P mode : 90.2 kW (123 PS,121 hp)
 at 2 200 min⁻¹ (rpm)
 P mode : 87.4 kW (119 PS,117 hp)
 at 2 000 min⁻¹ (rpm)
 Maximum torque 449 N·m (46 kgf·m, 331 lbf·ft)
 at 1 800 min⁻¹ (rpm)
 Piston Displacement 4.329 L (264 in³)
 Bore and stroke 105 mm x 125 mm (4.13" x 4.92")
 Batteries 2 x 12 V / 55 AH
 Governor Mechanical speed control with stepping motor

HYDRAULIC SYSTEM

- Work mode selector
- Digging mode / Attachment mode
- Engine speed sensing system

Main pumps 2 variable displacement axial piston pumps
 Maximum oil flow 2 x 150 L/min (39.6 US gpm, 33.0 Imp gpm)
 Pilot pump 1 gear pump
 Max. oil flow 24.2 L/min (6.4 US gpm, 5.3 Imp gpm)

Hydraulic Motors

Travel 2 variable displacement axial piston motors
 Swing 1 axial piston motor

Relief Valve Settings

Implement circuit 34.3 MPa (350 kgf/cm², 4 980 psi)
 Swing circuit 33.3 MPa (340 kgf/cm², 4 830 psi)
 Travel circuit 34.3 MPa (350 kgf/cm², 4 980 psi)
 Pilot circuit 3.9 MPa (40 kgf/cm², 570 psi)

Hydraulic Cylinders

High-strength piston rods and tubes. Cylinder cushion mechanisms provided in boom and arm cylinders to absorb shock at stroke ends.

Dimensions

	Q'ty.	Bore	Rod diameter
Boom	2	120 mm (4.72")	85 mm (3.35")
Arm	1	125 mm (4.92")	90 mm (3.54")
Bucket	1	105 mm (4.13")	75 mm (2.95")

Hydraulic Filters

Hydraulic circuits use high-quality hydraulic filters. A suction filter is incorporated in the suction line, and full-flow filters in the return line and swing/travel motor drain lines.

CONTROLS

Pilot controls. Hitachi's original shockless valve and quick warm-up system built in the pilot circuit.
 Implement levers 2
 Travel levers with pedals 2

UPPERSTRUCTURE

Revolving Frame

Welded sturdy box construction, using heavy-gauge steel plates for ruggedness. Reinforce frame for resistance to deformation.

Swing Mechanism

Axial piston motor with planetary reduction gear is bathed in oil. Swing circle is single-row, shear-type ball bearing with induction-hardened internal gear. Internal gear and pinion gear are immersed in lubricant. Swing parking brake is spring-set/hydraulic-released disc type.
 Swing speed 12.9 min⁻¹ (rpm)

Operator's Cab

Independent roomy cab, 1 005 mm (40") wide by 1 675 mm (66") high, conforming to ISO* Standards. Reinforced glass windows on 4 sides for visibility. Openable front windows (upper and lower). Adjustable, reclining seat with armrests; movable with or without control levers.

* International Standardization Organization

UNDERCARRIAGE

Tracks

Tractor-type undercarriage. Welded track frame using selected materials. Side frame welded to track frame. Lubricated track rollers, idlers, and sprockets with floating seals.
 Track shoes with triple grousers made of induction-hardened rolled alloy. Flat and triangular shoes are also available. Heat-treated connecting pins with dirt seals. Hydraulic (grease) track adjusters with shock-absorbing recoil springs.

Numbers of Rollers and Shoes on Each Side

Upper rollers 2
 Lower rollers 7
 Track shoes 46
 Track guard 1

Travel Device

Each track driven by 2-speed axial piston motor through planetary reduction gear for counterrotation of the tracks. Sprockets are replaceable. Parking brake is spring-set/hydraulic-released disc type. Travel shockless relief valve built in travel motor absorbs shocks when stopping travel. Automatic transmission system: High-Low.

Travel speeds High: 0 to 5.0 km/h (3.13 mph)
 Low: 0 to 3.0 km/h (1.88 mph)
 Maximum traction force 153 kN (15 600 kgf, 34 400 lbf)
 Gradeability 35° (70%) continuous

WEIGHTS AND GROUND PRESSURE

Equipped with 5.50 m (18'1") boom, 2.70 m (8'11") arm and 0.70 m³ (0.92 yd³: SAE, PCSA heaped) bucket.

ZAXIS180LC			
Shoe type	Shoe width	Operating weight	Ground pressure
Triple grouser	600 mm (24")	17 800 kg (39 200 lb)	39 kPa (0.40 kgf/cm ² , 5.69 psi)
	700 mm (28")	18 200 kg (40 100 lb)	34 kPa (0.35 kgf/cm ² , 4.98 psi)
	800 mm (31")	18 400 kg (40 600 lb)	30 kPa (0.31 kgf/cm ² , 4.41 psi)
	900 mm (35")	18 700 kg (41 200 lb)	27 kPa (0.28 kgf/cm ² , 3.98 psi)
Triangler	760 mm (30")	18 800 kg (41 400 lb)	32 kPa (0.33 kgf/cm ² , 4.69 psi)
	600 mm (24")	18 600 kg (41 000 lb)	41 kPa (0.42 kgf/cm ² , 0.41 psi)

ZAXIS180LCN			
Shoe type	Shoe width	Operating weight	Ground pressure
Triple grouser	500 mm (20")	17 500 kg (38 300 lb)	47 kPa (0.48 kgf/cm ² , 6.83 psi)
	600 mm (24")	17 700 kg (39 000 lb)	39 kPa (0.40 kgf/cm ² , 5.69 psi)
	700 mm (28")	18 100 kg (39 900 lb)	34 kPa (0.35 kgf/cm ² , 4.98 psi)
Flat	600 mm (24")	18 500 kg (40 800 lb)	41 kPa (0.42 kgf/cm ² , 0.41 psi)

Weights of the basic machines [including 3 800 kg (8 380 lb) counterweight and triple grouser shoes, excluding front-end attachment, fuel, hydraulic oil, engine oil and coolant etc.] are:

ZAXIS180LC 13 800 kg (30 400 lb) with 600 mm (24") shoes
 ZAXIS180LCN 13 500 kg (29 800 lb) with 500 mm (20") shoes

Buckets

Capacity		Width		No. of teeth	Weight	Recommendation			
SAE, PCSA heaped	CECE heaped	Without side cutters	With side cutters			ZAXIS180LC, ZAXIS180LCN			
							2.25m (7'5") arm	2.70m (8'10") arm	3.20m (10'6") arm
0.51 m ³ (0.67 yd ³)	0.45 m ³	720 mm (2'4")	850 mm (2'10")	3	530 kg (1 170 lb)				
0.70 m ³ (0.92 yd ³)	0.60 m ³	900 mm (2'11")	1 010 mm (3'4")	4	610 kg (1 340 lb)				
0.80 m ³ (1.05 yd ³)	0.70 m ³	1 030 mm (3'5")	1 140 mm (3'9")	5	670 kg (1 480 lb)				
0.91 m ³ (1.19 yd ³)	0.80 m ³	1 150 mm (3'9")	1 280 mm (4'2")	5	720 kg (1 590 lb)				
1.10 m ³ (1.44 yd ³)	0.90 m ³	1 330 mm (4'4")	1 460 mm (4'10")	6	780 kg (1 720 lb)				
1.20 m ³ (1.57 yd ³)	1.00 m ³	1 450 mm (4'9")	—	6	690 kg (1 520 lb)				
*1 0.70 m ³ (0.92 yd ³)	0.60 m ³	900 mm (2'11")	1 010 mm (3'4")	5	700 kg (1 540 lb)				
*1 0.80 m ³ (1.05 yd ³)	0.70 m ³	1 030 mm (3'5")	1 140 mm (3'9")	5	770 kg (1 700 lb)				
*1 0.91 m ³ (1.19 yd ³)	0.80 m ³	1 150 mm (3'9")	1 280 mm (4'2")	5	820 kg (1 810 lb)				
*2 0.60 m ³ (0.79 yd ³)	0.50 m ³	800 mm (2'8")	—	3	950 kg (2 090 lb)				
One point ripper bucket					1	540 kg (1 190 lb)			
Slope finishing blade: Width 1 100 mm (3'7"), length 1 800 mm (5'11")					—	590 kg (1 300 lb)			
V-type bucket: 0.4 m ³ (0.52 yd ³ : CECE heaped)					3	530 kg (1 170 lb)			
*3 Clamshell bucket: 0.6 m ³ (0.79 yd ³ : CECE heaped), Width 940 mm (3'1")					8	1 240 kg (2 730 lb)			
*4 Clamshell bucket: 0.6 m ³ (0.79 yd ³ : CECE heaped), Width 870 mm (2'10")					8	960 kg (2 120 lb)			

*1 Reinforced bucket *2 Ripper bucket *3 Center pull type *4 Shell push type

- Suitable for materials with density of 1 800 kg/m³ (3 030 lb/yd³) or less
- Suitable for materials with density of 1 600 kg/m³ (2 700 lb/yd³) or less
- Suitable for materials with density of 1 100 kg/m³ (1 850 lb/yd³) or less
- Heavy-duty service
- ◇ Slope-finishing service
- Not applicable

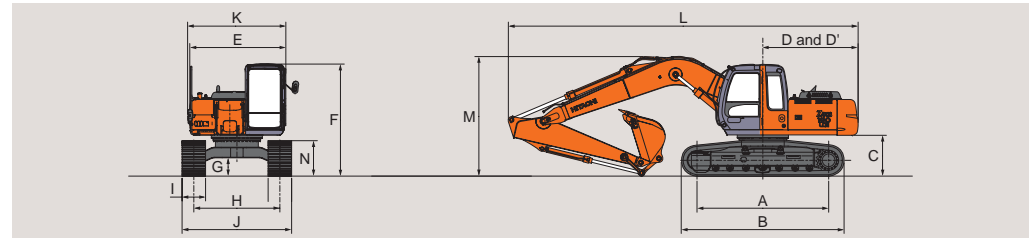
SERVICE REFILL CAPACITIES

	liters	US gal	Imp gal
Fuel tank	280.0	74.0	61.6
Engine coolant	19.2	5.1	4.2
Engine oil	15.8	4.2	3.5
Swing device	6.2	1.6	1.4
Travel final device	6.8	1.8	1.5
(each side)			
Hydraulic system	180.0	47.6	39.6
Hydraulic oil tank	100.0	26.4	22.0

BACKHOE ATTACHMENTS

Boom and arms are of welded, box-section design. 5.50 m (18'1") boom, and 2.25 m (7'5"), 2.70 m (8'11") and 3.20 m (10'6") arms are available. Bucket is of welded steel structure. Side clearance adjust mechanism provided on the bucket joint bracket.

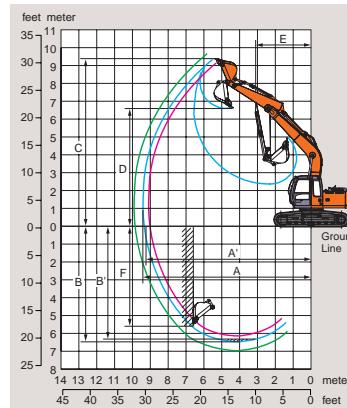
DIMENSIONS



	ZAXIS180LC	ZAXIS180LCN
A Distance between tumbles	3 370 (11'1")	3 370 (11'1")
B Undercarriage length	4 170 (13'8")	4 170 (13'8")
C Counterweight clearance	1 000 (3'3")	1 000 (3'3")
D Rear-end swing radius	2 440 (8'0")	2 440 (8'0")
D' Rear-end length	2 440 (8'0")	2 440 (8'0")
E Overall width of upperstructure	2 460 (8'1")	2 460 (8'1")
F Overall height of cab	2 880 (9'5")	2 880 (9'5")
G Min. ground clearance	450 (1'6")	450 (1'6")
H Track gauge	2 200 (7'3")	1 990 (6'6")
I Track shoe width	G 600 (24")	G 500 (20")
J Undercarriage width	2 800 (9'2")	2 490 (8'2")
K Overall width	2 800 (9'2")	2 500 (8'2")
L Overall length		
With 2.25 m (7'5") arm	8 980 (29'6")	8 950 (29'4")
With 2.70 m (8'11") arm	8 950 (29'4")	8 950 (29'4")
With 3.20 m (10'6") arm	8 950 (29'4")	8 950 (29'4")
M Overall height of boom		
With 2.25 m (7'5") arm	3 100 (10'2")	3 080 (10'1")
With 2.70 m (8'11") arm	3 080 (10'1")	3 080 (10'1")
With 3.20 m (10'6") arm	3 390 (11'2")	3 390 (11'2")
N Track height	910 (3'0")	910 (3'0")
With triple grouser shoes		

* Excluding track shoe lug. G: Triple grouser shoe

WORKING RANGES



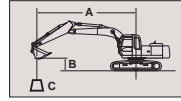
Arm length	ZAXIS180LC, ZAXIS180LCN		
	2.25 m (7'5")	2.7 m (8'11")	3.2 m (10'6")
A Max. digging reach	9 060 (29'9")	9 420 (30'1")	9 930 (32'7")
A' Max. digging reach (on ground)	8 900 (29'2")	9 260 (30'5")	9 780 (32'1")
B Max. digging depth	6 110 (20'1")	6 560 (21'6")	7 050 (23'2")
B' Max. digging depth (B' level)	5 850	6 310	6 860
C Max. cutting height	9 280 (30'5")	9 390 (30'10")	9 780 (32'1")
D Max. dumping height	6 460 (21'2")	6 580 (21'7")	6 950 (22'10")
E Min. swing radius	3 140 (10'4")	3 130 (10'3")	3 120 (10'3")
F Max. vertical wall	5 190 (17'0")	5 540 (18'2")	6 250 (20'6")
Bucket digging force	ISO 116 kN (11 800 kgf, 26 000 lbf)	116 kN (11 800 kgf, 26 000 lbf)	116 kN (11 800 kgf, 26 000 lbf)
	SAE : PCSA 102kN (10 400kgf, 22 900 lbf)	102kN (10 400kgf, 22 900 lbf)	102kN (10 400kgf, 22 900 lbf)
Arm crowding force	ISO 99 kN (10 100 kgf, 22 300 lbf)	86 kN (8 780 kgf, 19 400 lbf)	76 kN (7 760 kgf, 17 100 lbf)
	SAE : PCSA 95 kN (9 680 kgf, 21 300 lbf)	83 kN (8 460 kgf, 18 700 lbf)	74 kN (7 540 kgf, 16 600 lbf)

Excluding track shoe lug.

METRIC MEASURE

ZAXIS180LC

Rating over-side or 360 degrees Rating over-front Unit: 1 000 kg



A: Load radius
B: Load point height
C: Lifting capacity

Conditions	Load point height	Load radius														At max. reach				
		1 m	2 m	3 m	4 m	5 m	6 m	7 m	8 m	9 m	10 m	11 m	12 m	13 m	14 m	meter	meter	meter		
Arm 2.25 m	7 m																	*2.57	*2.57	6.94
	6 m																	2.25	*2.49	7.66
	5 m																	*3.68	*3.68	8.16
	4 m																	5.01	*5.01	8.49
	3 m																	4.34	*5.21	8.67
Bucket SAE,PCSA:0.70 m ³ CECE:0.60 m ³	2 m																	4.09	*6.13	8.72
	1 m																	3.90	6.60	8.63
Shoe 600 mm	0 (Ground)																	3.78	6.46	8.40
	-1 m																	5.31	*7.66	8.02
	-2 m																	5.34	*9.11	7.46
	-3 m																	*9.44	*9.44	6.66
	-4 m																	9.15	*9.18	6.17
	-5 m																	5.75	*5.85	6.17

Arm 2.70 m	7 m																	*2.34	*2.34	7.41
	6 m																	*3.07	*3.07	8.08
	5 m																	*3.22	*3.22	8.55
	4 m																	3.83	*3.83	8.86
	3 m																	*5.85	*5.85	9.04
Bucket SAE,PCSA:0.70 m ³ CECE:0.60 m ³	2 m																	5.79	*7.61	9.08
	1 m																	5.44	*8.85	8.99
Shoe 600 mm	0 (Ground)																	5.28	*8.61	8.78
	-1 m																	5.24	9.40	8.41
	-2 m																	*4.94	*4.94	7.89
	-3 m																	*7.95	*7.95	7.14
	-4 m																	*7.94	*7.94	6.09
	-5 m																	*8.32	*8.32	5.35

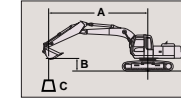
Arm 3.20 m	7 m																			*1.69	*1.69	8.04
	6 m																			2.74	*2.81	8.65
	5 m																			*2.85	*2.85	9.09
	4 m																			*3.23	*3.23	9.38
	3 m																			*4.98	*4.98	9.55
Bucket SAE,PCSA:0.51 m ³ CECE:0.45 m ³	2 m																		6.05	*6.75	9.59	
	1 m																		5.62	*8.24	9.51	
Shoe 600 mm	0 (Ground)																		5.37	*9.13	9.30	
	-1 m																		*4.63	*4.63	8.97	
	-2 m																		*3.47	*3.47	8.48	
	-3 m																		*5.94	*5.94	7.80	
	-4 m																		*8.86	*8.86	6.87	
	-5 m																		*10.8	*10.8	5.68	

Notes: 1. Ratings are based on SAE J1097.
2. Lifting capacity of the ZAXIS Series does not exceed 75% of tipping load with hte machine on firm, level ground or 87% full hydraulic capacity.
3. The load point is a hook (not standard equipment) located on the back of the bucket.
4. *Indicates load limited by hydraulic capacity.

METRIC MEASURE

ZAXIS180LCN

Rating over-side or 360 degrees Rating over-front Unit: 1 000 kg



A: Load radius
B: Load point height
C: Lifting capacity

Conditions	Load point height	Load radius														At max. reach						
		1 m	2 m	3 m	4 m	5 m	6 m	7 m	8 m	9 m	10 m	11 m	12 m	13 m	14 m	meter	meter	meter				
Arm 2.70 m	7 m																			*1.98	*1.98	7.41
	6 m																			2.25	*3.07	8.08
	5 m																			3.10	*3.22	8.55
	4 m																			3.83	*3.83	8.86
	3 m																			5.53	*5.85	9.04
Bucket SAE,PCSA:0.70 m ³ CECE:0.60 m ³	2 m																		5.03	*7.61	9.08	
	1 m																		4.69	*8.85	8.99	
Shoe 500 mm	0 (Ground)																		4.54	*8.61	8.78	
	-1 m																		4.49	9.24	8.41	
	-2 m																		*4.94	*4.94	7.89	
	-3 m																		*7.95	*7.95	7.14	
	-4 m																		*7.94	*7.94	6.09	
	-5 m																		7.84	*8.32	5.35	

Arm 2.25 m	7 m																					2.42	*2.57	6.94
	6 m																					1.96	*2.49	7.66
	5 m																					3.09	*3.24	8.16
	4 m																					1.62	*1.95	8.86
	3 m																					5.01	*5.01	9.04
Bucket SAE,PCSA:0.70 m ³ CECE:0.60 m ³	2 m																			3.57	*6.13	9.08		
	1 m																			3.38	6.48	8.99		
Shoe 500 mm	0 (Ground)																			3.27	6.35	8.40		
	-1 m																			4.56	*7.66	8.41		
	-2 m																			7.53	*7.83	7.46		
	-3 m																			*9.44	*9.44	6.66		
	-4 m																			7.81	*9.18	6.09		
	-5 m																			4.99	*5.85	5.35		

Arm 3.20 m	7 m																							*1.69	*1.69	8.04
	6 m																							2.42	*2.81	8.65
	5 m																							*2.85	*2.85	9.09
	4 m																							3.11	*3.23	9.38
	3 m																								4.98	*4.98
Bucket SAE,PCSA:0.51 m ³ CECE:0.45 m ³	2 m																			5.28	*6.75	9.59				
	1 m																			4.86	*8.24	9.51				
Shoe 500 mm	0 (Ground)																			4.62	*9.13	9.30				
	-1 m																			*4.63	*4.63	8.97				
	-2 m																			*3.47	*3.47	8.48				
	-3 m																			*5.94	*5.94	7.80				
	-4 m																			*8.86	*8.86	6.87				
	-5 m																			*10.8	*10.8	5.68				

Notes: 1. Ratings are based on SAE J1097.
2. Lifting capacity of the ZAXIS Series does not exceed 75% of tipping load with hte machine on firm, level ground or 87% full hydraulic capacity.
3. The load point is a hook (not standard equipment) located on the back of the bucket.
4. *Indicates load limited by hydraulic capacity.

ENGINE

- H/P mode control
- E mode control
- 50 A alternator
- Dry-type air filter with evacuator valve (with safety element)
- Cartridge-type engine oil filter
- Cartridge-type fuel filter
- Air cleaner double filters
- Radiator and oil cooler with dust protective net
- Radiator reserve tank
- Fan guard
- Isolation-mounted engine
- Auto-idle system
- Auto acceleration system

HYDRAULIC SYSTEM

- Work mode selector
- Engine speed sensing system
- E-P control system
- Quick warm-up system for pilot circuit
- Shockless valve in pilot circuit
- Boom-arm anti-drift valve
- Control valve with main relief valve
- Extra port for control valve
- Suction filter
- Full-flow filter
- Pilot filter

CAB**CRES (Center pillar Reinforced Structure) cab**

- OPG top guard fitted level I (ISO) compliant cab
- All-weather sound-suppressed steel cab
- Reinforced, tinted (bronze color) glass windows
- 4 fluid-filled elastic mounts
- Openable front windows-upper, and lower and left side windows
- Intermittent windshield retractable wipers
- Front window washer
- Adjustable reclining seat with adjustable armrests
- Footrest
- Electric double horn
- AM - FM radio with digital clock
- Auto-idle / acceleration selector
- Seat belt
- Drink holder
- Cigar lighter
- Ashtray
- Storage box
- Glove compartment
- Floor mat
- Heater
- Pilot control shut-off lever
- Engine stop knob.
- Auto control air conditioner

MONITOR SYSTEM

- Meters:
Hourmeter and trip-meter, engine coolant temperature gauge and fuel gauge.
- Warning lamps:
Alternator charge, engine oil pressure, engine overheat, air filter restriction and minimum fuel level.
- Pilot lamps:
Engine preheat, work light, auto-idle, auto-acceleration, digging mode and attachment mode
- Alarm buzzers:
Engine oil pressure and engine overheat

LIGHTS

- 2 working lights

UPPERSTRUCTURE

- Undercover
- 3 800 kg (8 380 lb) counterweight
- Fuel level float
- Hydraulic oil level gauge
- Tool box
- Utility space
- Rearview mirror (right & left side)
- Swing parking brake

UNDERCARRIAGE

- Travel parking brake
- Travel motor covers
- Track guards and hydraulic track adjuster
- Bolt-on sprocket
- Upper rollers and lower rollers
- Reinforced track links with pin seals
- 600 mm (24") triple grouser shoes [ZAXIS180LC]
- 500 mm (20") triple grouser shoes [ZAXIS180LCN]

FRONT ATTACHMENTS

- HN bushing
- WC thermal spraying
- Reinforced resin thrust plate
- Flanged pin
- Bucket clearance adjust mechanism
- Centralized lubrication system
- Dirt seal on all bucket pins
- 2.70 m (8'11") arm
- 0.70 m³ (0.92 yd³ : SAE, PCSA heaped) bucket

MISCELLANEOUS

- Standard tool kit
- Lockable machine covers
- Lockable fuel filling cap
- Skid-resistant tapes, plates and handrails.
- Travel direction mark on track frame

CAB

- Front glass lower guard
- Front glass upper guard
- Heater
- Vinyl covered adjustable reclining seat
- Cloth covered suspension seat
- Vinyl covered suspension seat
- Power sauce (12 V)
- Clear hatch

LIGHTS

- Additional light (on the top for cab)
- Additional light (on the boom)
- Rear light (on the top for cab)

FRONT ATTACHMENTS

- 2.25 m (7' 6") short arm
- 3.20 m (10' 6") long arm
- 2.70 m (8' 10") reinforced arm
- 3.20 m (10' 6") reinforced long arm

UNDERCARRIAGE

- Track under cover

ATTACHMENT

- Attachment basic piping
- Accessories for 2 speed selector
- Accessories for breaker
- Accessories for breaker & crusher
- Assist piping
- Additional pump

OTHERS

- Swing motion alarm device with lamps
- Travel motion alarm
- Hose rupture valve
- Auto lubrication system
- Electric fuel refilling pump
- Fuel double filter
- Pre-cleaner
- Tropical cover
- High-performance full-flow filter

Comparative information based on current Japan domestic model.
These specifications are subject to change without notice.
Illustrations and photos show the standard models, and may or may not include optional equipment, accessories, and all standard equipment with some differences in color and features.
Before use, go through Operator's Manual for proper operation.

Hitachi Construction Machinery Co., Ltd.

Head Office: 5-1 Koraku 2-chome, Bunkyo-ku,
Tokyo 112-8563, Japan

Telephone: 81-3-3830-8050

Facsimile: 81-3-3830-8202