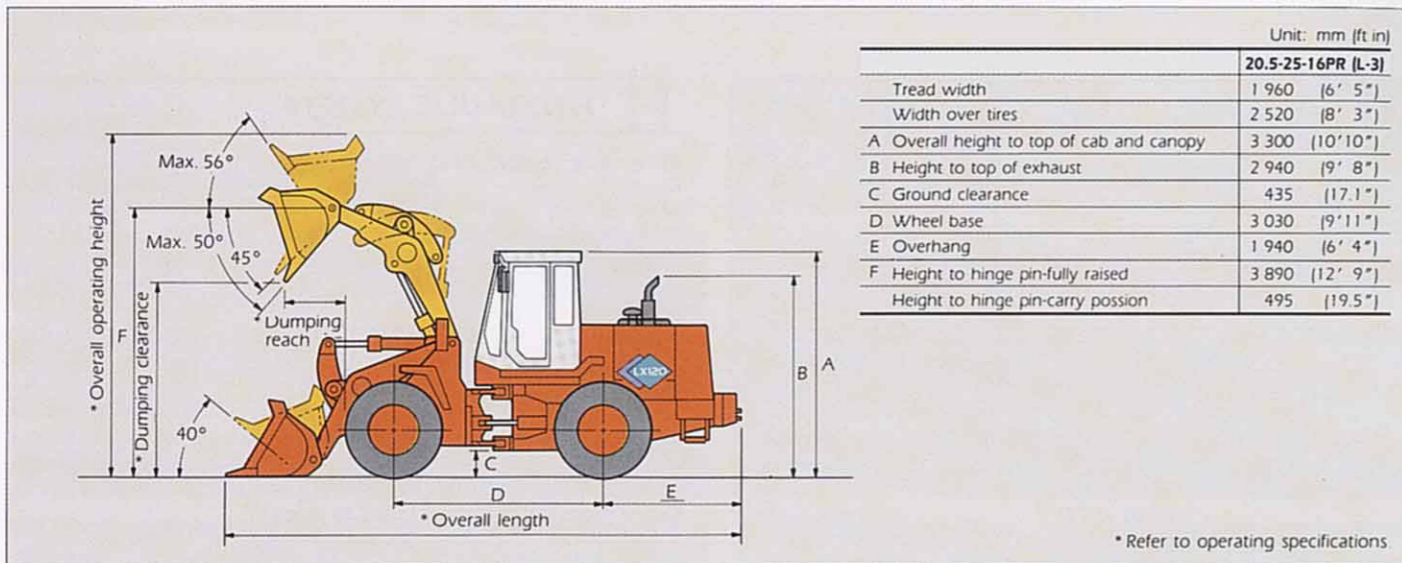


DIMENSIONS



Unit: mm (ft in)

	20.5-25-16PR (L-3)
Tread width	1 960 (6' 5")
Width over tires	2 520 (8' 3")
A Overall height to top of cab and canopy	3 300 (10' 10")
B Height to top of exhaust	2 940 (9' 8")
C Ground clearance	435 (1' 1")
D Wheel base	3 030 (9' 11")
E Overhang	1 940 (6' 4")
F Height to hinge pin-fully raised	3 890 (12' 9")
Height to hinge pin-carry position	495 (1' 9")

Bucket type	Stockpiling		Stockpiling/Excavating		
	With teeth	With Bolt-on cutting edges	With teeth	With Bolt-on cutting edges	
Bucket capacity	SAE heaped m ³ (yd ³)	2.3 (3.00)	2.5 (3.25)	2.0 (2.63)	2.1 (2.75)
	SAE struck m ³ (yd ³)	2.01 (2.63)	2.10 (2.75)	1.72 (2.25)	1.82 (2.38)
Dumping clearance at max. height and 45° dump angle	mm (ft in)	2 730 (8' 11")	2 785 (9' 2")	2 800 (9' 2")	2 855 (9' 4")
Reach at 2 130 mm (7' 0") height and 45° dump angle	mm (ft in)	1 635 (5' 4")	1 535 (5' 0")	1 600 (5' 3")	1 505 (4' 11")
Reach at max. height and 45° dump angle	mm (ft in)	1 080 (3' 7")	1 025 (3' 4")	1 010 (3' 4")	955 (3' 2")
Reach with arm horizontal and bucket level	mm (ft in)	2 470 (8' 1")	2 395 (7' 10")	2 370 (7' 9")	2 295 (7' 6")
Digging depth	Bucket horizontal mm (ft in)	95 (3.7")	85 (3.3")	85 (3.3")	75 (3.0")
	10° digging angle mm (ft in)	340 (13.4")	320 (12.5")	315 (12.4")	295 (11.6")
Overall operating height	mm (ft in)	5 295 (17' 4")	5 295 (17' 4")	5 060 (16' 7")	5 060 (16' 7")
Overall length	Bucket on ground mm (ft in)	7 610 (25' 0")	7 520 (24' 8")	7 500 (24' 7")	7 420 (24' 4")
	Bucket in carry position mm (ft in)	7 540 (24' 9")	7 480 (24' 6")	7 470 (24' 6")	7 410 (24' 4")
Turning radius (outside corner of bucket carry position)	mm (ft in)	6 060 (19' 11")	6 015 (19' 9")	6 025 (19' 9")	5 985 (19' 8")
Static tipping load*	Straight kg (lb)	9 595 (21 155)	9 405 (20 740)	9 730 (21 455)	9 530 (21 015)
	Full 40° turn kg (lb)	8 130 (17 925)	7 960 (17 550)	8 250 (18 190)	8 070 (17 795)
Breakout force	kN (kgf, lbf)	130.8 (13 335, 29 405)	118.8 (12 115, 26 715)	143.2 (14 600, 32 195)	129.2 (13 175, 29 050)
Operating weight	kg (lb)	12 710 (28 025)	12 790 (28 200)	12 665 (27 925)	12 750 (28 115)

Notes: 1. All dimensions, weight and performance data based on SAE J732 FEB80 and J742 FEB85 Standard.
2. Static tipping load and operating weight market with* include 20.5-25-16PR (L-3) tires (no ballast) with lubricants, coolant, full fuel tank, ROPS cab and operator.
Machine stability and operating weight depend on counterweight, tire size and other attachments. Compensate operating weight and static tipping load with weight changes Listed below.

ADJUSTMENTS TO OPERATING WEIGHTS AND TIPPING LOAD FOR 2.0 m³ (2.63 yd³) BUCKET

Tires and options	Operating weight	Tipping load	
		Straight	Full 40° turn
		kg (lb)	
20.5-25-12PR (L-2) tubeless tires	-160 (-355)	-115 (-255)	-100 (-220)
20.5-25-12PR (L-3) tubeless tires	-30 (-65)	-20 (-45)	-15 (-35)
20.5-25-16PR (L-2) tubeless tires	-155 (-340)	-110 (-245)	-95 (-210)
20.5-25, Radial, One Start L2 equivalent	+50 (+110)	+35 (+75)	+30 (+65)
Rear tire ballast (20.5-25 tires)	+825 (+1 820)	+1 165 (+2 570)	+1 005 (+2 215)
ROPS canopy (in lieu of ROPS cab)	-145 (-320)	-135 (-300)	-110 (-245)
2nd counterweight*	+530 (+1 170)	+1 215 (+2 680)	+995 (+2 195)
Bucket teeth (removed)	-110 (-245)	+135 (+300)	+130 (+285)

* Not to be used with CaCl₂

STANDARD EQUIPMENT

Standard equipment may vary by country, so please consult your Hitachi dealer for details.

ENGINE

- Air cleaner, dry type with dust valve
- Alternator, 95 amp
- Antifreeze, with level sensor in radiator
- Fan guard
- Blower-type cooling fan
- Fuel filter and water separator
- Muffler

POWER TRAIN

- Power shift-torque convertor-type transmission
- Single lever electric shift
- Automatic shift in 4th speed range
- 2-way shift (upshift/downshift button)
- Transmission oil cooler
- Transmission clutch disconnect
- Axles with conventional differentials
- Front and rear brakes hydraulically actuated, wet disk, inboard mounted
- Conforms to SAE J1473 OCT90, ISO3450
- Parking brake, spring-applied, hydraulically-released, disc and

caliper
Conforms to J1473 OCT90, ISO3450

HYDRAULICS

- Hydraulic oil cooler
- Two spool hydraulic control valve with single lever control
- Return to dig control for bucket
- Automatic boom height control
- Power steering (two cylinders) and 40 degrees articulation each side

ELECTRICAL SYSTEM

- Lights:
Driving with guards
Flashing and turn signals
Stop and tail
Conforms to SAE J99
- Front and rear work
Conforms to SAE J1029
- Horn:
Conforms to SAE J994, J1446
- Reverse warning alarm:
Conforms to SAE J994, J1146
- Battery terminal covers
- Bypass start cover at starter

OPERATOR'S STATION

- Canopy, ROPS/FOPS, isolation mount

Conforms to SAE J1040 APR88, SAE J231 JAN81, ISO3471 and ISO3449

- Tilt type steering wheel
- Adjustable deluxe suspension vinyl seat with armrests
- Two-inch (51 mm) seat belt with retractors
Conforms to SAE J386
- Ashtray
- Storage compartment
- Floor mat
- Key switch, start and shutoff
- Mirrors, rearview, two inside, two outside
Conforms to SAE J985

MULTIFUNCTION MONITOR

- Instruments:
Engine coolant temp
Fuel gauge
Transmission oil temp
- Digital display (selectable):
Engine rpm
Speedometer
Hourmeter
Alternator voltage
- Warning lights:
Low radiator coolant level
Air restriction indicator
Low alternator voltage

Low transmission oil press
Hydraulic oil filter restriction
Low brake pressure
Park brake on
Secondary steering activated (if equipped)
Fasten seat belt
• Indicator:
Turn signals and flashers
• Built-in diagnostics:
Fault code retrieval
Onboard diagnostics for all monitor, wiring, gauges, sensors, etc.

OTHER

- Fenders, front and rear
- Lift/tie-down hooks
- License plate bracket
- Transmission side frame guards
- Articulation locking bar
Conforms to SAE J276
- Rubber steering stops
- Drawbar
- Lockable engine side shields and rear grille
- Loader boom lock
- Rear bottom guard
- Service steps and hand-rails
Conforms to SAE J185

OPTIONAL EQUIPMENT

Optional equipment may vary by country, so please consult your Hitachi dealer for details.

BUCKETS

- Auxiliary spill guard
- Bolt-on cutting edges
- Bucket teeth

AXLES

- Front axle disconnect
- Front hydraulic differential lock

ENGINE

- Additional battery
- Battery disconnect

HYDRAULICS

- Two spool valve with two lever control
- Three spool valve, single lever main control with second

control lever for auxiliary function
• Three spool valve, two lever main control with third control lever for auxiliary function

ELECTRICAL SYSTEM

- Alternator
135 amp

OPERATOR'S STATION

- Cab, ROPS/FOPS
Conforms to SAE J1040 APR88, SAE J231 JAN81, ISO3471 and ISO3449
- Heater, defroster, pressurizer
Conforms to SAE J1503

Dome light/map light
Front and rear windshield wiper and washer
• Cab, ROPS/FOPS
Conforms to SAE J1040 APR88, SAE J231 JAN81, ISO3471 and ISO3449
Air conditioner, heater, defroster, pressurizer
Conforms to SAE J1503
Dome light/map light
Front and rear windshield wiper and washer
• Three in. (76 mm) seat belt with retractors
Conforms to SAE J386

- Adjustable deluxe suspension cloth seats with armrests
- Secondary steering
Conforms to SAE J53
- Windows - cab rear opening
- Seat back rest extension

OVERALL VEHICLE

- Auxiliary bottom guards, transmission and front frame
- 2nd (Not applicable with ballasted tires) counterweights
- Ride control system
- Steps, frame mounted with access platform
Conforms to SAE J185

WORKING EQUIPMENT

Bucket (with skid shoes)

Bucket type	Capacity* m ³ (yd ³)	Width mm (in)	Weight kg (lb)
Stockpiling w/bolt-on teeth	2.3 (3.00)	2 590 (102.0)	1 110 (2 450)
Stockpiling w/bolt-on cutting edges	2.5 (3.25)	2 580 (101.6)	1 190 (2 625)
Stockpiling/Excavation w/bolt-on teeth	2.0 (2.63)	2 590 (102.0)	1 065 (2 350)
Stockpiling/Excavation w/bolt-on cutting edges	2.1 (2.75)	2 580 (101.6)	1 150 (2 535)

*SAE heaped

BUCKET SELECTION GUIDE

