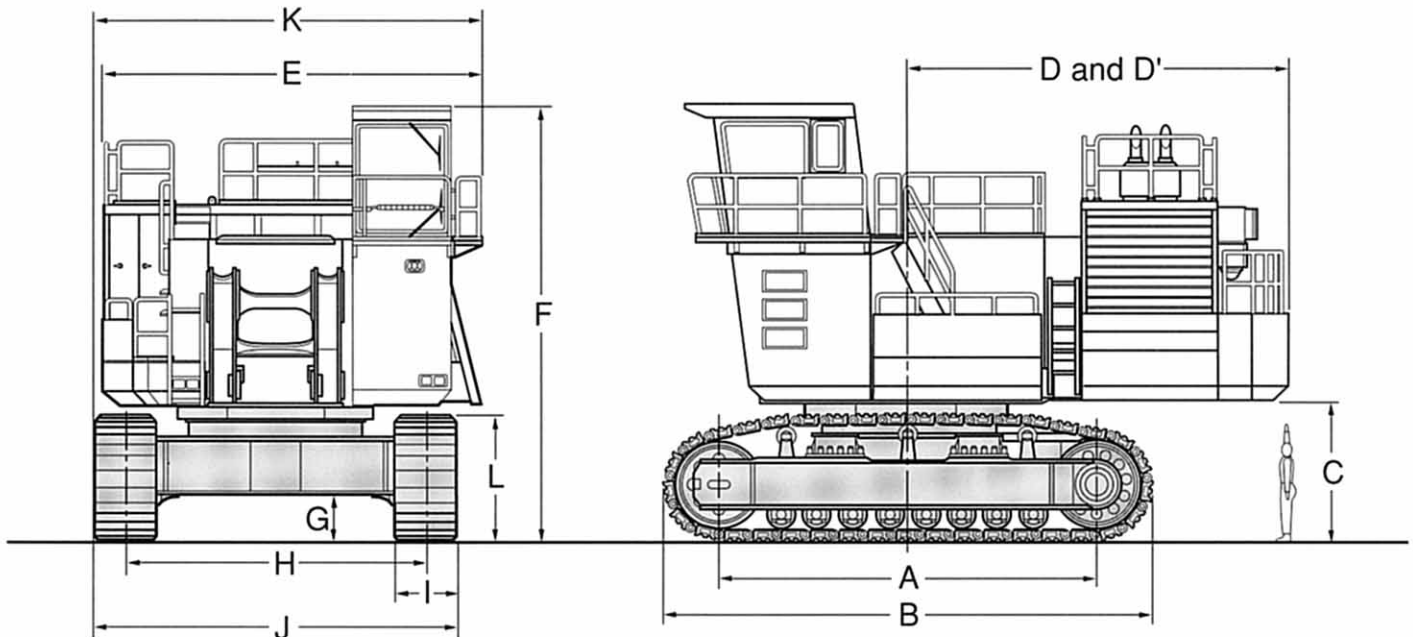


HITACHI

SuperEX EX2500

- Rated Engine HP (GROSS) 970 kW (1 300 HP)
- Operating Weight Loading Shovel: 238 500 kg (525 800 lb) Diesel Engine
237 000 kg (523 000 lb) Electric Motor
Backhoe: 236 000 kg (520 000 lb) Diesel Engine
- Loading Shovel Bucket PCSA Heaped: 14.0 m³ (18.3 yd³)
- Backhoe Bucket PCSA Heaped: 13.8 m³ (18.1 yd³)
CECE Heaped: 12.2 m³

Specifications



A	Distance between tumblers	6 120 mm (20'1")
B	Undercarriage length	7 870 mm (25'10")
C	Counterweight clearance	2 230 mm (7'4")
D	Rear-end swing radius	6 290 mm (20'8")
D'	Rear-end length	6 190 mm (20'4")
E	Overall width of upperstructure	6 200 mm (20'4")
F	Overall height of cab	7 040 mm (23'1")
G	Min. ground clearance	800 mm (2'7")
H	Track gauge	5 000 mm (16'5")
I	Track shoe width	1 000 mm (39")
J	Undercarriage width	6 000 mm (19'8")
K	Overall width	6 350 mm (20'10")
L	Track height	2 060 mm (19"11")



ENGINE

Model	Cummins KTA50-C
Type	Water-cooled, 4-cycle, 16-cylinder, turbo-charged and after-cooled, direct injection chamber-type diesel engine
Rated flywheel horsepower (DIN 6271, net)	935 kW (1 272 PS) at 1 800 min ⁻¹ (rpm)
Rated flywheel horsepower (SAE J1349, net)	935 kW (1 250 HP) at 1 800 min ⁻¹ (rpm)
Maximum flywheel horsepower (SAE J1349, gross)	1 194 kW (1 600 HP) at 2 100 min ⁻¹ (rpm) 970 kW (1 300 HP) at 1 800 min ⁻¹ (rpm)
Maximum torque	5 280 N-m (538 kgf-m, 3 890 lbf-ft) at 1 500 min ⁻¹ (rpm)
Piston displacement	50.3 L (3 070 in ³)
Bore and stroke	159 mm × 159 mm (6.3" × 6.3")
Starting system	24 V electric motor
Batteries	4 × 12 V, 4 × 220 AH
Cold starting	Ether aided



ELECTRIC MOTOR

Model	HITACHI TFOA-KK
Rated continuous output	860 kW
Voltage & Frequency	6 600 V & 50 Hz



HYDRAULIC SYSTEM

- E-P Control (Computer-aided Engine-Pump Control system)
Main pumps regulated by electric engine speed sensing control system.
- OHS (Optimum Hydraulic System)
6 main pumps and 3 valves system enable both independent and combined operations of all functions.
- FPS (Fuel-saving Pump System)
FPS minimizes energy loss with superior performance in fine control.
- Auto-idling system for saving fuel and reducing noise.
- RMS (Relief-oil Minimizing System)
RMS reduces energy losses with minimum oil flow.
- Hydraulic drive cooling-fan system for oil cooler.
- Forced-lubrication and forced-cooling pump drive system.

Main pumps	4 variable-displacement, axis piston pumps for front attachment and travel
Pressure setting	29.4 MPa (300 kgf/cm ² , 4 270 psi)
Max. oil flow	4 × 375 L/min (99.1 US gpm, 82.5 Imp gpm)
Swing pumps	2 variable-displacement, axis piston pumps for swinging
Pressure setting	29.4 MPa (300 kgf/cm ² , 4 270 psi)
Max. oil flow	2 × 425 L/min (112.3 US gpm, 93.5 Imp gpm)
Pilot pump	1 gear pump
Pressure setting	3.9 MPa (40 kgf/cm ² , 569 psi)
Max. oil flow	108 L/min (28.5 US gpm, 23.8 Imp gpm)

Relief Valve Settings

Implement circuit	29.4 MPa (300 kgf/cm ² , 4 270 psi)
Swing circuit	27.5 MPa (280 kgf/cm ² , 3 980 psi)
Travel circuit	29.4 MPa (300 kgf/cm ² , 4 270 psi)
Pilot circuit	3.9 MPa (40 kgf/cm ² , 569 psi)

Hydraulic Cylinders

High-strength piston rods and tubes adopted. Cylinder cushion mechanisms are provided for boom, arm, bucket and dump cylinders. Bucket cylinder of loading shovel is provided with protector.

Cylinder Dimensions

Loading shovel

	Qty.	Bore	Rod diameter
Boom	2	310 mm (12.2")	230 mm (9.06")
Arm	1	280 mm (11.0")	210 mm (8.27")
Bucket	2	250 mm (9.84")	180 mm (7.09")
Dump	2	215 mm (8.46")	130 mm (5.12")
Level	1	310 mm (12.2")	230 mm (9.06")

Backhoe

	Qty.	Bore	Rod diameter
BE-boom	2	310 mm (12.2")	230 mm (9.06")
BE-arm	2	280 mm (11.0")	210 mm (8.27")
Bucket	2	230 mm (9.06")	170 mm (6.69")

Hydraulic Filters

All hydraulic circuits have high-quality hydraulic filters for protection against oil contamination and longer life of hydraulic components.

	Qty.	
Full flow filter	3	10 μm
High pressure strainer (In main & swing pump delivery line)	6	80 meshes
Drain filter (For all plunger type pumps & motors)	1	10 μm
By-pass filter (In oil cooler by-pass line)	1	5 μm
Pilot filter	1	10 μm

These filters are centralized in arrangement for facilitating maintenance.



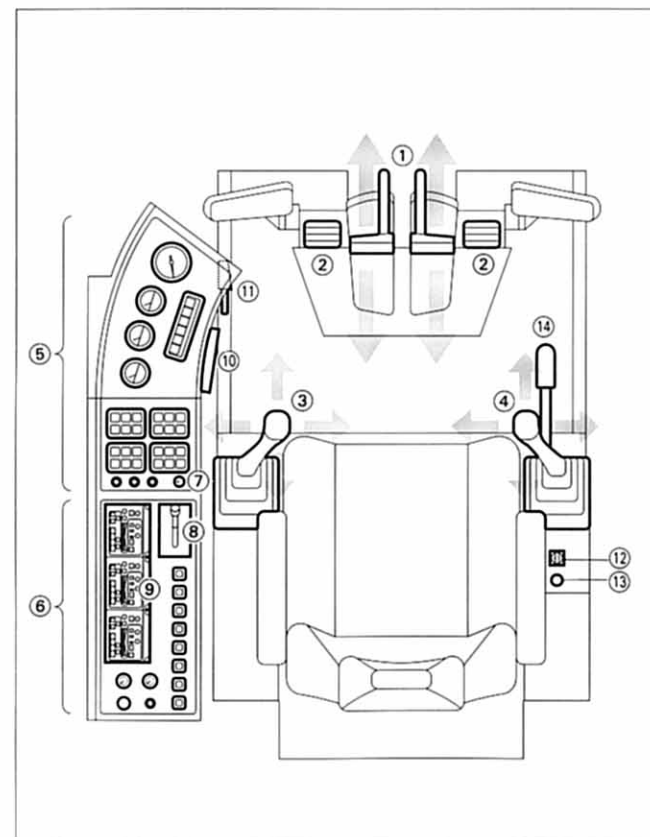
CONTROLS

2 Implement Levers

Remote-controlled joystick hydraulic servo system. Right lever is for boom and bucket control, left lever for swing and arm control. For loading shovel, 2 pedals provided for opening/closing the bottom dump bucket.

2 Travel Levers with Pedals

Remote-controlled hydraulic servo system. Independent drive at each track allows counterrotation of tracks.



- 1 Travel Levers with Pedals
- 2 Bucket Open/Close Pedals (Loading Shovel)
- 3 Swing/Arm Control Lever
- 4 Boom/Bucket Control Lever
- 5 Monitor Panel and Switch Panel
- 6 Switch Panel
- 7 Dimmer Switch
- 8 Engine Speed Control Lever
- 9 Air Conditioner Panel
- 10 AM-FM Radio
- 11 Emergency Evacuation Hammer
- 12 Emergency Engine Stop Switch
- 13 Engine Starter Switch
- 14 Pilot Control Shut-off Lever



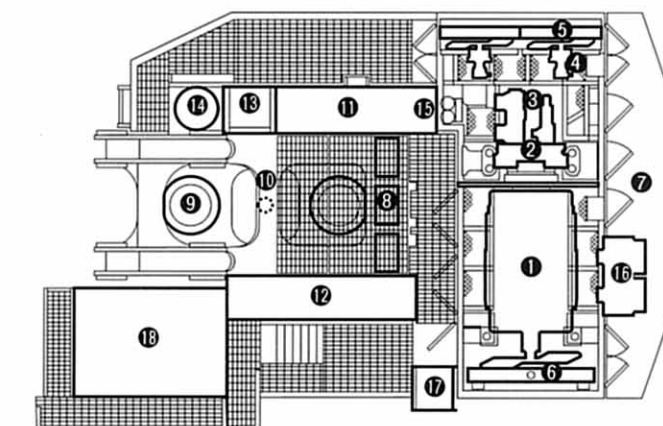
UPPERSTRUCTURE

Revolving Frame

A deep, full-reinforced box section. Heavy-gauge steel plates used for ruggedness. Disassembled into two units of base machine and engine unit.

Deck Machinery

Maintenance accessibility is the major feature in the layout of deck machinery. Side-walk provide easy access to engines, hydraulic and electrical components.



- 1 Diesel Engine
- 2 Pump Drive Unit
- 3 Hydraulic Pump × 6
- 4 Hydraulic Oil Cooling Fan Motor × 2
- 5 Hydraulic Oil Cooler × 2
- 6 Engine Radiator
- 7 Engine-Pump Bulkhead
- 8 Control Valve × 3
- 9 Swing Device × 2
- 10 Center Joint
- 11 Hydraulic Oil Tank
- 12 Fuel Tank
- 13 Battery Unit
- 14 Lubricator
- 15 High-Pressure Strainer × 6
- 16 Air Filter × 2 (Outer/Inner)
- 17 Retractable-Type Ladder
- 18 Cab

Swing Mechanism

2 high-torque, axial-piston motors with two-stage planetary gear run in oil. Swing circle with dirt seals is a heavy-duty, triple-row, cylindrical roller bearing. Induction-hardened internal swing circle gear and pinion immersed in lubricant. Parking brake of spring-set/hydraulic-released disc type. This parking brake is manually releasable.

Swing speed	3.8 min ⁻¹ (rpm): Diesel
	3.5 min ⁻¹ (rpm): Electric motor

Operator's Cab

Steel construction with integrated, falling-object-protective structure meeting SAE FOPS. Independent, pressurized, 1 600 mm (5'3") wide, 2 150 mm (7'1") high, roomy 6.6 m³ (8.6 yd³) cab with tinted-glass windows features all-round visibility.

Spring-suspension-type, fully-adjustable reclining seat with armrests; movable with or without front & swing control levers by slide. Instrument and control panel is built in cab wall in easy range of the operator. 3 air conditioner system.

Noise level..... 75 dB (A) in the cab; on max. engine speed under no-load condition

Eye level height..... 6 400 mm (21'0")

UNDERCARRIAGE

Tracks

Shovel-type undercarriage. Dual-flanged-type bolt linkage for side frame and X-form center frame assures durability. Heavy-duty track frame of all-welded, stress-relieved structure. Top-grade materials used for toughness. Lifetime-lubricated induction-hardened track rollers, idlers and drive tumblers with floating seals. Opposed double-type upper rollers for easy removal of mud. Specially heat-treated connection pins. Hydraulic track adjuster provided with N₂ gas accumulator with relief valve. Travel motion alarm device.

Shovel-type Undercarriage

Triple grouser track shoes of induction-hardened cast steel
Shoe width..... 1 000 mm (39")

Numbers of Rollers and Shoes on Each Side

Upper rollers..... 3
Lower rollers..... 8
Track shoes..... 39

Traction Device

Each track driven by high-torque, axial piston motors, allowing counterrotation of tracks. 2-stage planetary gear plus spur gears reduction device. Dual-support-type traction device. Parking brake of spring-set/hydraulic-released disc type. This parking brake is manually releasable.

Travel speeds Diesel High: 0 to 2.3 km/h (1.4 mph)
Low: 0 to 1.6 km/h (1.0 mph)
Electric motor High: 0 to 2.2 km/h (1.4 mph)
Low: 0 to 1.5 km/h (0.9 mph)

Maximum traction force 1 330 kN
(135 600 kgf, 299 000 lbf)

Gradeability..... 30° (60%) continuous

WEIGHTS AND GROUND PRESSURE

Loading Shovel

Equipped with 14.0 m³ (18.3 yd³; PCSA heaped) bottom dump bucket

Shoe type	Shoe width	Operating weight	Ground pressure
Triple grousers	1 000 mm (39")	238 500 kg (525 800 lb) [Diesel engine]	173 kPa (1.76 kgf/cm ² , 25.0 psi)

Backhoe

Equipped with 9.00 m (29'6") BE-boom, 4.20 m (13'9") BE-arm, and 13.8 m³ (18.1 yd³; PCSA heaped) bucket

Shoe type	Shoe width	Operating weight	Ground pressure
Triple grousers	1 000 mm (39")	236 000 kg (520 000 lb) [Diesel engine]	173 kPa (1.76 kgf/cm ² , 25.0 psi)

SERVICE REFILL CAPACITIES

	liters	US gal	Imp gal
Fuel tank.....	3 600	951.1	791.9
Engine coolant.....	313	82.7	68.9
Engine oil.....	163	43.1	35.9
Pump drive.....	26	6.9	5.7
Swing drive device..... (2 units)	2 × 100	2 × 26.4	2 × 22.0
Travel drive device.....	2 × 137	2 × 36.2	2 × 30.1
Hydraulic system.....	2 950	779.4	648.9
Hydraulic tank.....	1 100	290.6	242.0



LOADING SHOVEL ATTACHMENTS

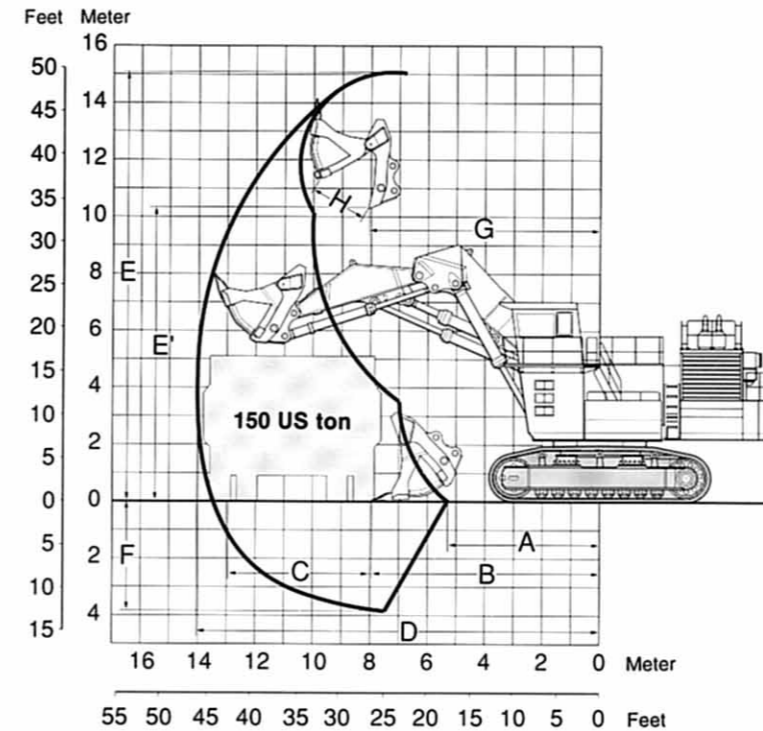
Boom and arm are of all-welded, low-stress, high-tensile strength steel full-box section design. Efficient, automatic level crowding achieved by one-lever control because parallel link mechanism keeps the bucket digging angle constant, and level cylinder circuit maintains the bucket height constant. (Auto-Leveling Crowd Mechanism)

Bucket (PCSA heaped)

Capacity	Width	No. of teeth	Weight	Type
14.0 m ³ (18.3 yd ³)	3 590 mm (11'9")	6	20 030 kg (44 200 lb)	Bottom dump type general purpose bucket



WORKING RANGES



A	Min. digging distance	5 340 mm (17'6")
B	Min. level crowding distance	7 980 mm (26'2")
C	Level crowding distance	4 980 mm (16'4")
D	Max. digging reach	14 060 mm (46'2")
E	Max. cutting height	15 010 mm (49'3")
E'	Max. dumping height	10 350 mm (33'11")
F	Max. digging depth	3 720 mm (12'2")
G	Working radius at max. dumping height	8 140 mm (26'8")
H	Max. bucket opening width	2 150 mm (7'1")
Crowding force		918 kN (93 600 kgf, 206 400 lbf)
Breakout force		843 kN (86 000 kgf, 189 600 lbf)

Digging force (SAE)

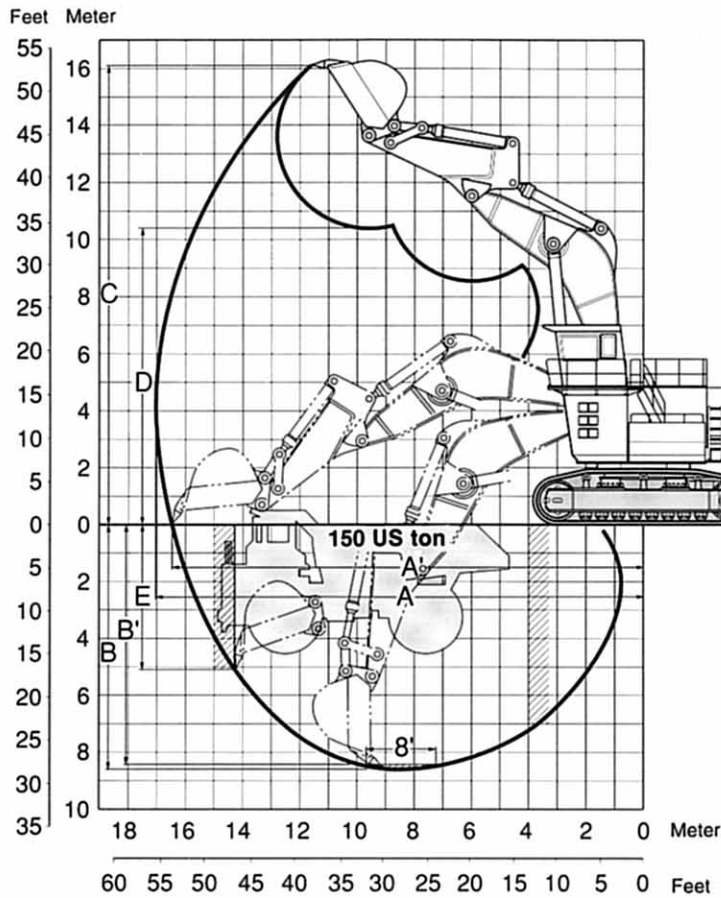
BACKHOE ATTACHMENTS

Boom and arm are of all-welded, low-stress, full-box section design. Bucket of all-welded, high-strength steel structure.

Bucket

Capacity		Width		No. of teeth	Weight	Type
PCSA heaped	CECE heaped	Without side cutters	With side cutters			
13.8 m ³ (18.1 yd ³)	12.2 m ³	2 950 mm (9' 8")	—	5	11 700 kg (25 800 lb)	General purpose bucket

WORKING RANGES



BE-boom length		9.00 m (29' 6")
BE-arm length		4.20 m (13' 9")
A Max. digging reach		17 050 mm (55' 11")
A' Max. digging reach (on ground)		16 500 mm (54' 2")
B Max. digging depth		8 570 mm (28' 1")
B' Max. digging depth (8° level)		8 470 mm (27' 9")
C Max. cutting height		16 160 mm (53' 0")
D Max. dumping height		10 360 mm (34' 0")
E Max. vertical wall		5 070 mm (16' 8")
Bucket digging force	ISO	832 kN (84 800 kgf, 187 000 lbf)
	SAE: PCSA	755 kN (77 000 kgf, 170 800 lbf)
Arm crowd force	ISO	825 kN (84 100 kgf, 185 400 lbf)
	SAE: PCSA	745 kN (76 000 kgf, 167 600 lbf)

SE STANDARD EQUIPMENT

Standard equipment may vary by country, so please consult your Hitachi dealer for details.

ENGINE

- 100 A alternator
- Dry-type air filter with dust ejection system
- Cartridge-type engine oil filter
- Cartridge-type engine oil bypass filter
- Cartridge-type fuel filter
- Water filter
- Radiator with dust protective net
- Radiator reserve tank
- Fan guard
- Isolation-mounted engine
- PRELUB system
- Auto-idle system
- Emergency engine stop system

HYDRAULIC SYSTEM

- E-P control system
- OHS (Optimum Hydraulic System)
- FPS (Fuel-saving Pump System)
- RMS (Relief-oil Minimizing System)
- Hydraulic drive cooling-fan system
- Forced-lubrication and forced-cooling pump drive system
- Control valve with main relief valve
- Suction filter
- Full-flow filter
- Bypass filter
- Pilot filter
- Drain filter
- High-pressure strainer

CAB

All-weather sound-suppressed steel integrated cab (meeting SAE FOPS).

Reinforced/tinted (bronze color) glass side and rear windows. Parallel-link-type intermittent windshield wiper. Front windshield washer. Adjustable reclining seat with adjustable armrests. Footrest. Electric double horn. Auto-tuning AM-FM radio with digital clock. Seat belt. Storage spaces. Floor mat. Air conditioner with defloster. Rearview mirror. Evacuation hammer. Emergency rope. Pilot control shut-off lever.

MONITOR SYSTEM

- Meters: Hourmeter. Fuel gauge. Hyd. oil temperature gauge. Engine coolant temperature gauge. Tachometer.
- Pilot lamps (Green): Engine oil level. Engine coolant level. Hydraulic oil level. Travel mood (slow). Travel mood (fast). Auto idle. Engine room light. Entrance light. PRELUB.
- Warning lamps (Red): Alternator charge. Pump transmission oil pressure. Engine oil pressure. Engine overheat. Hydraulic oil level. Fuel. Engine coolant level. Auto-lubrication. Engine controller. Air cleaner restriction. Pump contamination. Engine stop. Stop valve. Ladder position.
- Alarm buzzers: Pump transmission oil pressure.

Engine oil pressure. Engine overheat. Hydraulic oil level. Engine coolant level. Valve close.

LIGHTS

- 6 working lights, entrance light, 3 engine room lights, 2 cab lights

UPPERSTRUCTURE

- Lockable machine covers
- 30 700 kg (67 700 lb) counterweight
- Hydraulic drive grease gun with hose reel
- Retractable-type ladder with spring-type balancer
- Swing parking brake

UNDERCARRIAGE

- Travel parking brake
- Travel motion alarm device
- Hydraulic track adjuster with N₂ gas accumulator with relief valve
- 1 000 mm (39") triple grouser shoes

MISCELLANEOUS

- Standard tool kit
- Stairs and handrails (meeting ISO)
- Recirculation air filter
- Ventilation air filter
- 12 V power terminal board
- Stop valve for transport and reassembly

SE OPTIONAL EQUIPMENT

Optional equipment may vary by country, so please consult your Hitachi dealer for details.

- Auto-lubrication system (Lincoln)

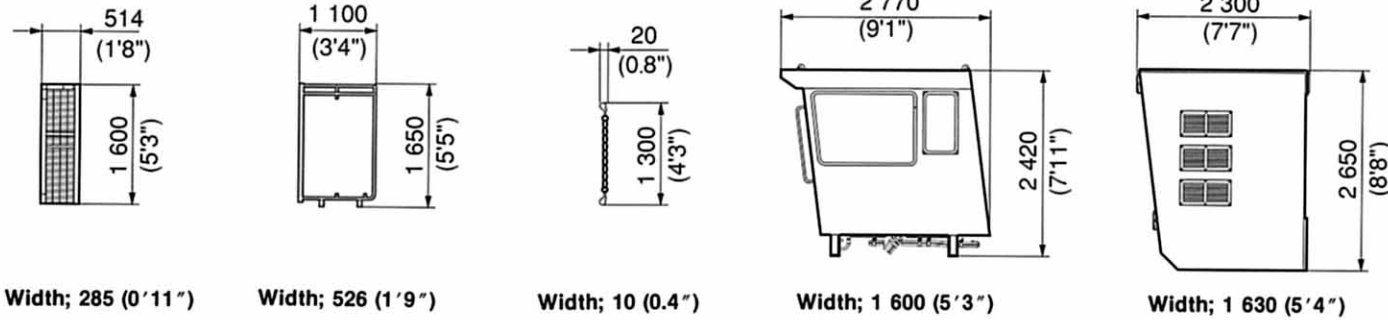
Unit: mm (ft in)

- Easily assembled owing to local assembling system requiring no welding.
- Overall width of below 3 500 mm (11'6") during transportation.

UPPERSTRUCTURE

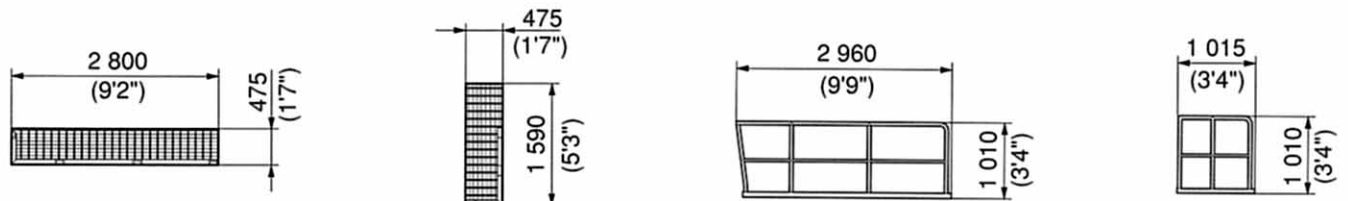
Unit: mm (ft in)

Side walk; 52 kg (110 lb) Handrail; 18 kg (40 lb) Chain; 0.75 kg (2 lb) Cab; 1 540 kg (3 400 lb) Cab bed; 1 870 kg (4 120 lb)



Width; 285 (0'11") Width; 526 (1'9") Width; 10 (0.4") Width; 1 600 (5'3") Width; 1 630 (5'4")

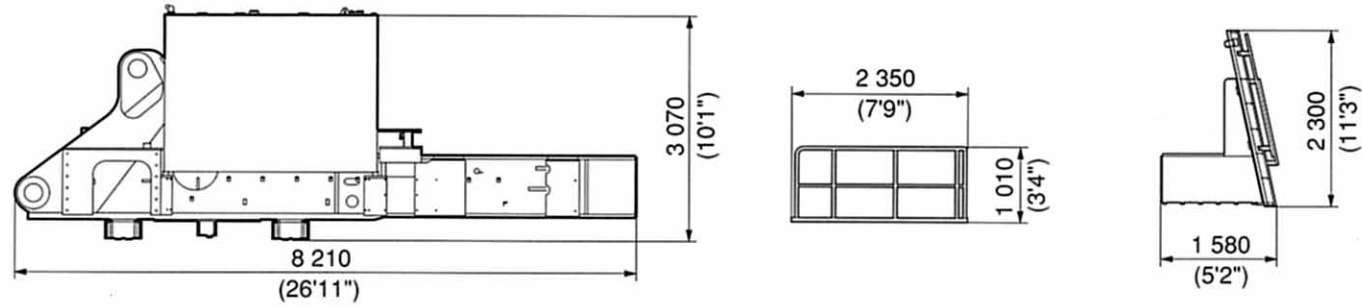
Side walk; 79 kg (170 lb) Side walk; 54 kg (120 lb) Handrail; 28 kg (60 lb) Handrail; 15 kg (33 lb)



Width; 285 (0'11") Width; 285 (0'11") Width; 465 (1'6") Width; 465 (1'6")

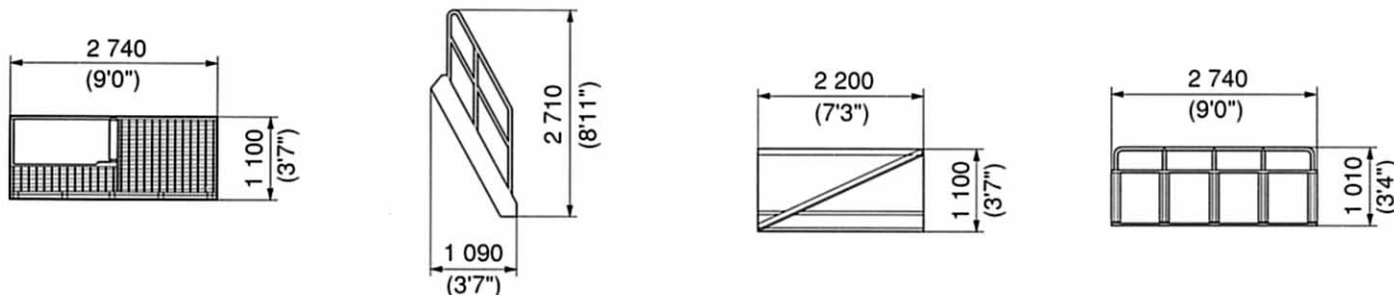
Main frame assembly; 31 700 kg (69 900 lb)

Handrail; 53 kg (120 lb) Ladder; 426 kg (940 lb)



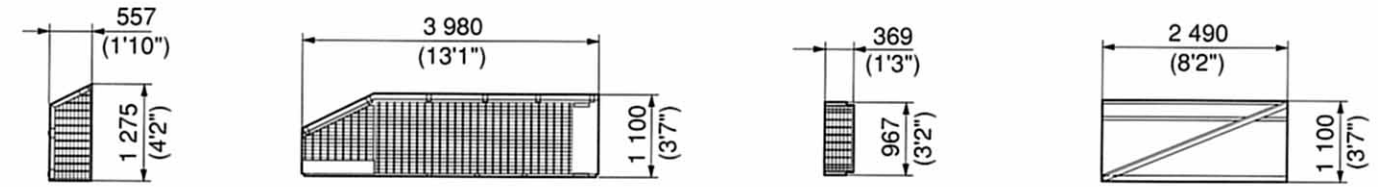
Width; 3 500 (11'6") Width; 658 (2'2") Width; 650 (2'2")

Side walk; 249 kg (550 lb) Step; 88 kg (190 lb) Fender; 110 kg (240 lb) Handrail; 68 kg (150 lb)



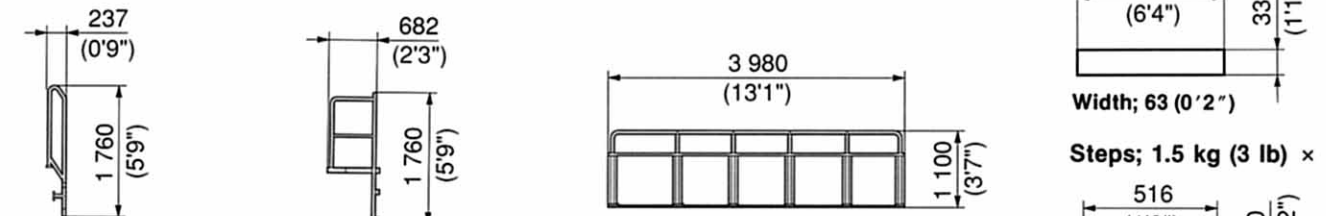
Width; 700 (2'4") Width; 620 (2'0") Width; 800 (2'7") Width; 98 (0'4")

Side walk; 80 kg (180 lb) Side walk; 333 kg (730 lb) Side walk; 19 kg (40 lb) Fender; 122 kg (270 lb)



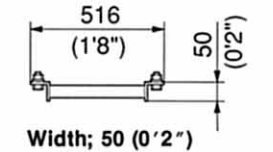
Width; 700 (2'4") Width; 700 (2'4") Width; 261 (0'10") Width; 800 (2'7")

Handrail; 20 kg (40 lb) Handrail; 26 kg (60 lb) Handrail; 94 kg (210 lb) Plate; 14 kg (31 lb)



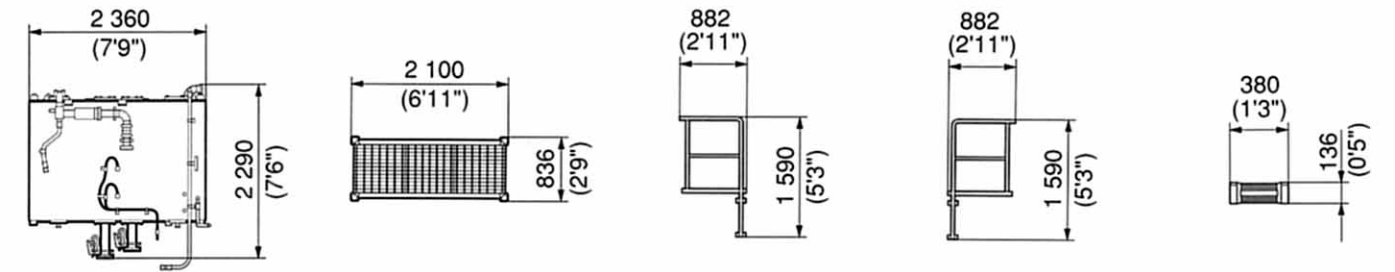
Width; 121 (0'5") Width; 700 (2'4") Width; 552 (1'10") Width; 63 (0'2")

Steps; 1.5 kg (3 lb) × 2



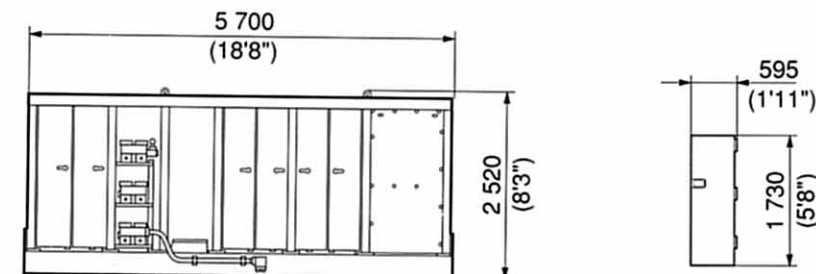
Width; 50 (0'2")

Hydraulic oil tank; 3 490 kg (7 690 lb) Step; 47 kg (100 lb) Handrail; 19 kg (42 lb) Handrail; 19 kg (42 lb) Steps; 3 kg (7 lb) × 5



Width; 882 (2'11") Width; 140 (0'6") Width; 192 (0'8") Width; 192 (0'8") Width; 75 (0'3")

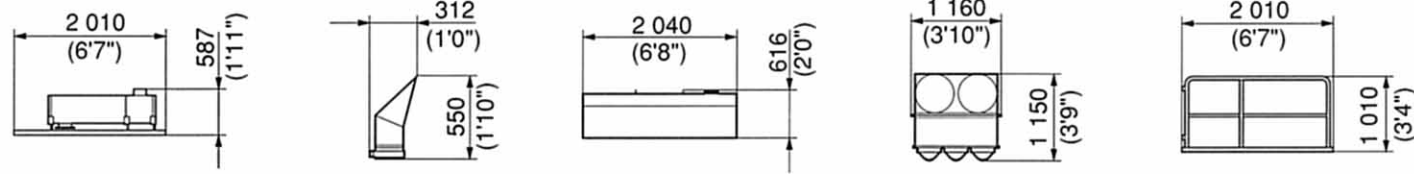
Diesel engine unit; 14 700 kg (32 400 lb) Door; 26 kg (60 lb)



Width; 2 500 (8'2") Width; 50 (0'2")

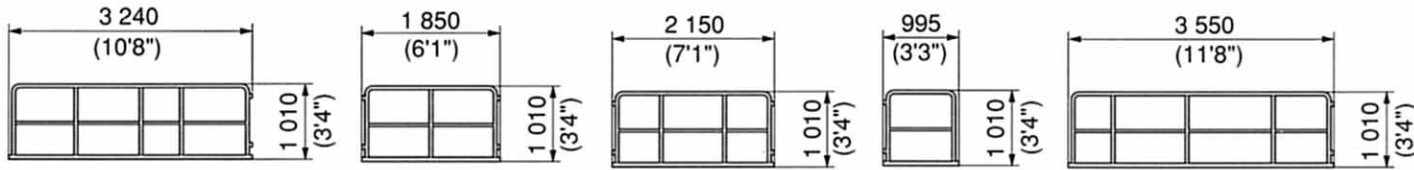
Unit:mm (ft in)

Muffler; 85 kg (190 lb) Muffler; 6.2 kg (14 lb) Muffler cover; 77 kg (170 lb) Air cleaner; 162 kg (360 lb) Handrail; 20 kg (44 lb)



Width; 459 (1'6") Width; 358 (1'2") Width; 952 (3'1") Width; 700 (2'4") Width; 86 (3.4")

Handrail; 33 kg (73 lb) Handrail; 18 kg (40 lb) Handrail; 23 kg (51 lb) Handrail; 11 kg (24 lb) Handrail; 32 kg (71 lb)

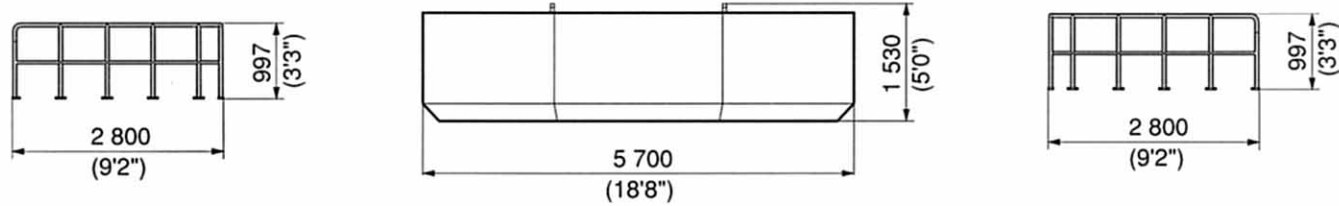


Width; 86 (3.4") Width; 47 (1.9") Width; 47 (1.9") Width; 86 (3.4") Width; 86 (3.4")

Handrail; 48 kg (110 lb)

Counterweight; 30 700 kg (67 700 lb)

Handrail; 48 kg (110 lb)

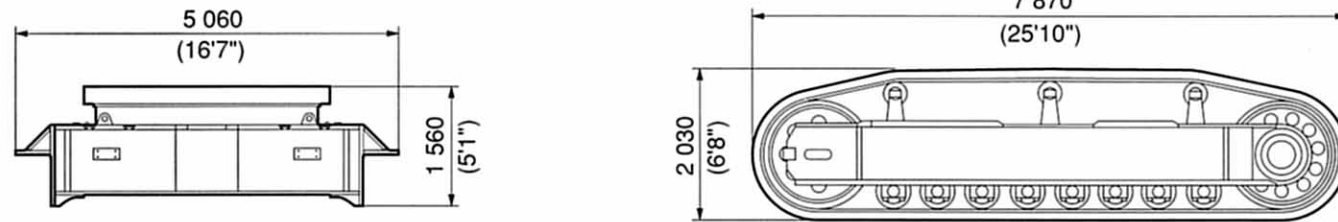


Width; 1 050 (3'5") Width; 1 110 (3'8") Width; 1 050 (3'5")

UNDERCARRIAGE

Track center frame assembly; 21 800 kg (48 100 lb)

Track side frame assembly; 31 400 kg (69 200 lb) × 2



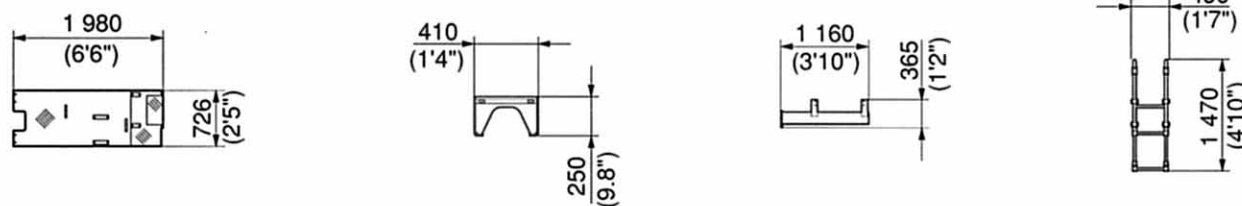
Width; 3 300 (10'10") Width; 2 230 (7'4") with travel device

Cover; 88 kg (190 lb)

Step; 8 kg (18 lb)

Stay; 26 kg (57 lb)

Ladder; 16 kg (35 lb)



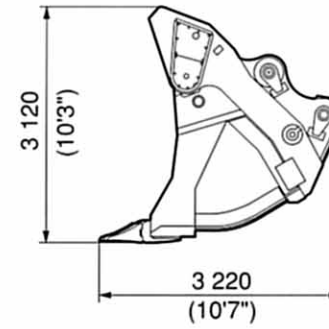
Width; 780 (2'7") Width; 200 (7.9") Width; 84 (3.3") Width; 603 (2'0")

LOADER ATTACHMENT

Unit:mm (ft in)

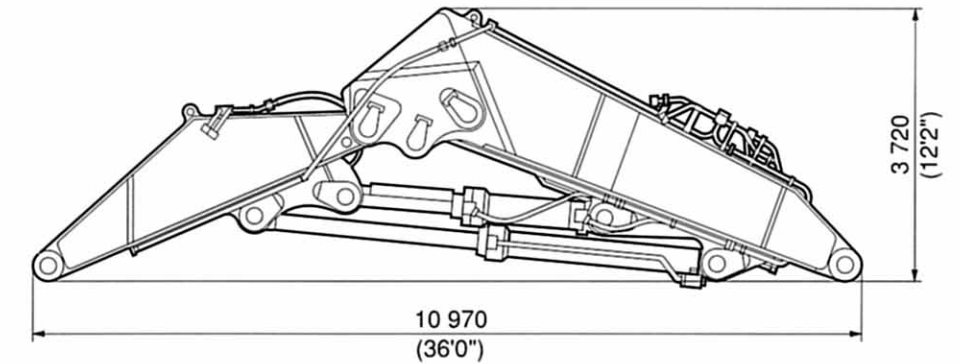
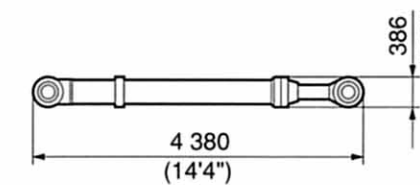
Bucket assembly with bucket points; 20 030 kg (44 200 lb)
Capacity; 14.0 m³ (18.3 yd³; PCSA heaped)

Boom-arm assembly; 31 200 kg (68 800 lb)



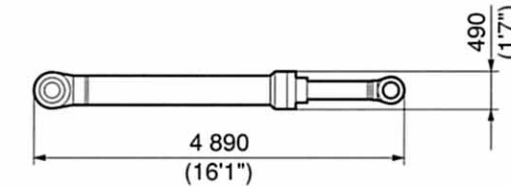
Width; 3 860 (12'8")

Bucket cylinders; 1 870 kg (4 120 lb) × 2



Width; 2 600 (8'6")

Boom cylinders; 2 960 kg (6 530 lb) × 2

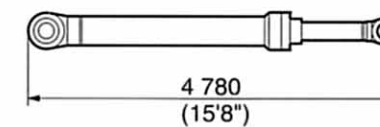


BACKHOE ATTACHMENT

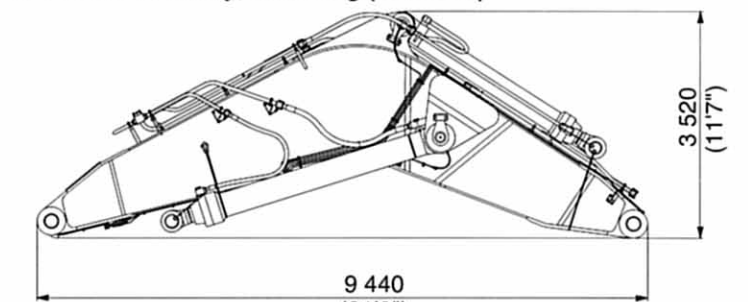
Unit:mm (ft in)

Boom cylinders; 3 120 kg (6 880 lb) × 2

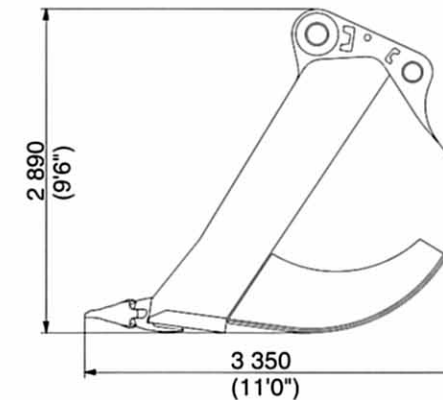
BE-boom assembly; 30 000 kg (66 200 lb)



Bucket assembly; 11 700 kg (25 800 lb)
Capacity; 13.8 m³ (18.1 yd³; PCSA heaped)

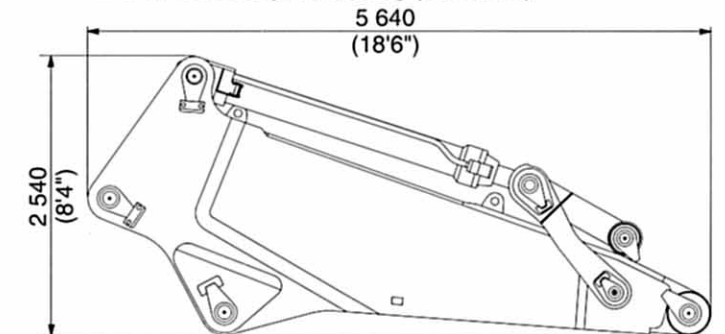


Width; 2 240 (7'4")



Width; 2 950 (9'8")

BE-arm assembly; 16 300 kg (35 900 lb)

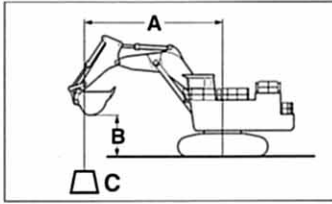


Width; 1 640 (5'5")

LIFTING CAPACITIES

SuperEX

METRIC MEASURE



A: Load radius
B: Load point height
C: Lifting capacity



Rating over-side or 360 degrees



Rating over-rear

Unit: 1000 kg

Conditions	Load point height m	Load radius														At max. reach		
		2 m		4 m		6 m		8 m		10 m		12 m		14 m		@ m		
BE-boom 9.00 m BE-arm 4.20 m Bucket PCSA: 13.8 m ³ CECE: 12.2 m ³ Shoes 1 000 mm	12											*19.3	*19.3			*11.2	*11.2	14.7
	10											*27.5	*27.5			*10.6	*10.6	15.7
	8											*31.0	*31.0	*23.1	*23.1	*10.5	*10.5	16.2
	6								*44.9	*44.9	*38.1	*38.1	28.7	*29.6	*10.8	*10.8	16.5	
	4								51.4	*54.1	37.1	*42.3	27.2	*34.8	*11.5	*11.5	16.4	
	2								48.1	*56.3	34.9	*44.0	26.0	34.6	*12.7	*12.7	16.0	
	0 (ground)								46.3	*53.5	33.5	*43.5	25.2	*33.8	*14.6	*14.6	15.2	
	-2							*34.1	*34.1	45.8	*51.5	33.1	*39.8	*23.7	*23.7			
-4					*43.2	*43.2	*40.7	*40.7	*41.9	*41.9	*30.8	*30.8						

ENGLISH MEASURE

Unit: 1000 lb

Conditions	Load point height ft	Load radius														At max. reach		
		20 ft		25 ft		30 ft		35 ft		40 ft		45 ft		50 ft		@ ft in		
BE-boom 29'6" BE-arm 13'9" Bucket PCSA: 18.1 yd ³ Shoes 39"	40															*24.9	*24.9	48'1"
	35								*56.5	*56.5						*23.7	*23.7	50'8"
	30								*63.1	*63.1	*45.2	*45.2				*23.2	*23.2	52'6"
	25							*71.3	*71.3	*70.1	*70.1	*59.2	*59.2			*23.2	*23.2	53'7"
	20					*108.5	*108.5	*91.0	*91.0	*81.8	*81.8	66.5	*68.8			*23.8	*23.8	54'1"
	15							103.7	*106.5	81.0	*89.8	63.8	*78.1	*34.3	*34.3	*24.8	*24.8	54'1"
	10							98.0	*112.4	77.1	*93.4	61.2	*79.8	*38.2	*38.2	*26.5	*26.5	53'4"
	5					*100.3	*100.3	93.8	*115.0	74.0	*95.0	59.2	78.7			*28.9	*28.9	52'1"
	0 (ground)					*95.5	*95.5	91.2	*113.6	71.9	*93.7	57.8	77.3			*32.3	*32.3	50'0"
	-5			*83.2	*83.2	*99.1	*99.1	90.1	*107.5	71.0	*88.4	57.5	*70.5			*30.3	*30.3	47'3"
-10	*108.7	*108.7	*75.1	*75.1	*108.3	*108.3	90.4	*95.8	71.5	*77.2								
-15			*88.3	*88.3	*92.4	*92.4	*76.0	*76.0	*54.5	*54.5								

- Notes: 1. Ratings are based on SAE J1097.
2. Lifting capacity of the Super EX Series does not exceed 75% of tipping load with the machine on firm, level ground or 87% of full hydraulic capacity.
3. The load point is a hook (not standard equipment) loaded on the back of the bucket.
4. *Indicates load limited by hydraulic capacity.

These specifications are subject to change without notice.

Hitachi Construction Machinery Co., Ltd.

Head office: Nippon Bldg., 6-2, 2-chome, Ohtemachi,
Chiyoda-ku, Tokyo 100-0004, Japan

Telephone : Tokyo(03)3245-6390

Facsimile : Tokyo(03)3246-2609